

# PUMA

GOLF



**PUSH  
PLAY**



PUMA GOLF IS A BRAND THAT PUSHES LIMITS, BOUNDARIES, AND CULTURE.

**PUSH**  
**PLAY**

PUMA GOLF  
SF21  
MANTRA



WE MAKE UNEXPECTED CHOICES AND PUSH SPORT FORWARD.

**Men's Apparel** 08

---

**Women's Apparel** 34

---

**Junior's Apparel** 54

---

Footwear 63

---

**Accessories** 98

---

# CLOUDSPUN™

---

CLOUDSPUN feels like ultra-soft cotton, but it's not! CLOUDSPUN is a custom-milled performance polyester/spandex blend that meets the highest performance standards and feels softer than any shirt in your closet.



**Crazy Soft**

**Moisture Wicking**

**4 Way Stretch**



# MATERIALS TECHNOLOGY RESEARCH MATTR

MATTR represents Materials, Technology, and Research, and is designed to provide the highest level of on-course comfort in all climate environments. Because if it matters to the golfer, it matters to us.



## **Motion**

Designed With 4 Way Stretch

## **Breathability**

Superior Breathability And Comfort

## **Dryness**

Moisture Wicking And Fast-Drying



# JACKPOT

## BOTTOMS

Jackpot shorts and pants are designed to provide ultimate on-course performance with a refined look and sophisticated details that also make them great for dinner or the office.



FOR COURSE OR OFFICE

**Stretch Waistband**

**Double Belt Loops**

**Duraweave Pocketbags**

**Silicone Branding**



# JACKPOT FIT GUIDE

## RELAXED



### PERFORMANCE PANT

Performance fit, Relaxed at the hip with straight leg

**22"** **19.5"**  
KNEE WIDTH LEG OPENING

**28 - 40, 33**  
WAIST

**30, 32, 34**  
INSEAM

## STRAIGHT



### 5 POCKET PANT

Performance fit, Fitted at the hip with tapered leg and watch pocket

**21"** **19"**  
KNEE WIDTH LEG OPENING

**28 - 40, 33**  
WAIST

**30, 32, 34**  
INSEAM

## FITTED



### TAILORED PANT

Tailored fit, Fitted at the hip with tapered leg

**20"** **18"**  
KNEE WIDTH LEG OPENING

**28 - 40, 33**  
WAIST

**30, 32, 34**  
INSEAM

## CASUAL



### JOGGER

Performance fit, Relaxed at the hip with slim leg and elastic stretch leg opening

**20"** **8"**  
KNEE WIDTH LEG OPENING

**28 - 40, 33**  
WAIST

**32**  
INSEAM

## RELAXED



### PERFORMANCE SHORT

Performance fit, Relaxed at the hip, now shorter length

**19.5"** **25.5"**  
THIGH WIDTH LEG OPENING

**28 - 42, 33**  
WAIST

**10**  
INSEAM

PUSH  
PLAY



PUSH  
PLAY



PUSH  
PLAY



PUSH  
PLAY



PUSH  
PLAY







# Men's Apparel

# D1 Colorflow Overview



P 110 SNAPBACK CAP  
022537 | SP1500C / \$30



SNACK SHACK P 110 TRUCKER  
SNAPBACK CAP  
023412 | SP1750C / \$35



P 110 SNAPBACK CAP  
022537 | SP1500C / \$30



SNACK SHACK P 110 TRUCKER  
SNAPBACK CAP  
023412 | SP1750C / \$35



P 110 SNAPBACK CAP  
022537 | SP1500C / \$30



MOWER P 110 SNAPBACK CAP  
023567 | SP1750C / \$35



MATTR TOPO POLO  
531095 | SP3500C / \$70



MATTR CARTS POLO  
531093 | SP3500C / \$70



MATTR SNACK SHACK POLO  
532116 | SP3750C / \$75



MATTR FINE STRIPE POLO  
599123 | SP3750C / \$75



MATTR KIWII STRIPE POLO  
599113 | SP3500C / \$70



MATTR LONGSLEEVE POLO  
531719 | SP4000C / \$80



CLOUDSPUN MOWERS POLO  
532162 | SP3750C / \$75



CLOUDSPUN LEGEND POLO  
599928 | SP3500C / \$70



CLOUDSPUN MONARCH POLO  
599117 | SP3250C / \$65



ROTATION POLO  
577875 | SP2750C / \$55



Navy Blazer

Mazarine Blue

Persian Red

Teaberry

Placid Blue

High Rise



CLOUDSPUN STLTH 1/4 ZIP  
597588 | SP4000C / \$80



CLOUDSPUN T7 1/4 ZIP  
599129 | SP3750C / \$75



CLOUDSPUN T7 VEST  
599130 | SP3500C / \$70



CLOUDSPUN CREWNECK  
531279 | SP3500C / \$70



FIRST MILE WIND JACKET  
599128 | SP5000C / \$100



RIVERWALK WIND JACKET  
599237 | SP5000C / \$100



ROTATION 1/4 ZIP  
577900 | SP3250C / \$65



101 STRIPE SHORT  
599240 | SP3500C / \$70



101 HEATHER SHORT  
599238 | SP3500C / \$70



JACKPOT SHORT  
599246 | SP3250C / \$65



JACKPOT JOGGER  
530063 | SP4500C / \$90



JACKPOT 5 POCKET PANT  
599245 | SP4250C / \$85



JACKPOT PANT  
599243 | SP4250C / \$85



TAILORED JACKPOT PANT  
599244 | SP4250C / \$85

MEN'S

# D2 Colorflow Overview

21



P 110 SNAPBACK CAP  
022537 | SP1500C / \$30

02



POUNCE ADJUSTABLE CAP  
021431 | SP1000C / \$20

02



TRUCKER P 110 SNAPBACK CAP  
022538 | SP1500C / \$30

03



MOVING DAY 110 SNAPBACK CAP  
023408 | SP1750C / \$35

02



MINI GOLF P 110 SNAPBACK CAP  
023543 | SP1750C / \$35

01

02



MATR SIGNATURE REQUIRED POLO  
532163 | SP3750C / \$75



07

09



MATR FINE STRIPE POLO  
599123 | SP3750C / \$75



09

11



MATR KIWII STRIPE POLO  
599113 | SP3500C / \$70



02

03



MATR LONGSLEEVE POLO  
531719 | SP4000C / \$80



01

13

14



CLOUDSPUN LEGEND POLO  
599928 | SP3500C / \$70



01

02



CLOUDSPUN ATMOS POLO  
531094 | SP3750C / \$75



01

02



CLOUDSPUN FEATHERS POLO  
531092 | SP3750C / \$75



02

09

14

15



CLOUDSPUN MONARCH POLO  
599117 | SP3250C / \$65



01

03

04



ROTATION POLO  
577875 | SP2750C / \$55



08

09

14



CLOUDSPUN STLTH 1/4 ZIP  
597588 | SP4000C / \$80



Navy Blazer

Deep Lichen Green

Federal Blue

Allure

Limeade

High Rise

02 10 14



CLOUDSPUN T7 1/4 ZIP  
599129 | SP3750C / \$75

02



CLOUDSPUN T7 VEST  
599130 | SP3500C / \$70

01 02 06



CLOUDSPUN CREWNECK  
531279 | SP3500C / \$70

02



CLOUDSPUN WRMLBL JACKET  
531099 | SP8000C / \$160

02



CLOUDSPUN WRMLBL VEST  
531100 | SP6000C / \$120

01



FIRST MILE WIND JACKET  
599128 | SP5000C / \$100

03

04



RIVERWALK WIND JACKET  
599237 | SP5000C / \$100

05

02



ROTATION 1/4 ZIP  
577900 | SP3250C / \$65

04

16

02



101 STRIPE SHORT  
599240 | SP3500C / \$70

02 04 09



101 HEATHER SHORT  
599238 | SP3500C / \$70

02 03 04 05 06 07 21 23



JACKPOT SHORT  
599246 | SP3250C / \$65

02



JACKPOT JOGGER  
530063 | SP4500C / \$90

02 03 04 05 07 12



JACKPOT 5 POCKET PANT  
599245 | SP4250C / \$85

02 03 04 05 06 08



JACKPOT PANT  
599243 | SP4250C / \$85

02 03 04 07



TAILORED JACKPOT PANT  
599244 | SP4250C / \$85

MEN'S

# D3 Colorflow Overview

02



MOVING DAY 110 SNAPBACK CAP  
023408 | SP1750C / \$35

01



MOVING DAY 110 SNAPBACK CAP  
023408 | SP1750C / \$35

04



P 110 SNAPBACK CAP  
022537 | SP1500C / \$30

01



P 110 SNAPBACK CAP  
022537 | SP1500C / \$30

01



MEN'S LIFESTYLE BEANIE  
023622 | SP1300C / \$26

01



MATTR PARADISE POLO  
531097 | SP3500C / \$70

02

10



MATTR FINE STRIPE POLO  
599123 | SP3750C / \$75

11

08



MATTR KIWI STRIPE POLO  
599113 | SP3500C / \$70

13

01



MATTR LONGSLEEVE POLO  
531719 | SP4000C / \$80

01



CLOUDSPUN LEAVES POLO  
532115 | SP3750C / \$75

03

01



CLOUDSPUN PLUMERIA POLO  
531096 | SP3750C / \$75

02

10



CLOUDSPUN LEGEND POLO  
599928 | SP3500C / \$70

15

16

01



CLOUDSPUN MONARCH POLO  
599117 | SP3250C / \$65

16

17

01



ROTATION POLO  
577875 | SP2750C / \$55

02

04

50

01



CLOUDSPUN STLTH 1/4 ZIP  
597588 | SP4000C / \$80

14

Puma Black

Deep Teal

Teal


Corydalis Blue

Parfait Pink

Bright White


01 11 14



CLOUDSPUN T7 1/4 ZIP  
599129 | SP3750C / \$75 


01



CLOUDSPUN T7 VEST  
599130 | SP3500C / \$70 


02 05



CLOUDSPUN CREWNECK  
531279 | SP3500C / \$70 


01



CLOUDSPUN WRMLBL JACKET  
531099 | SP8000C / \$160 


01



CLOUDSPUN WRMLBL VEST  
531100 | SP6000C / \$120 

01




FIRST MILE WIND JACKET  
599128 | SP5000C / \$100 

02



01



RIVERWALK WIND JACKET  
599237 | SP5000C / \$100 

01



02




03



39



ROTATION 1/4 ZIP  
577900 | SP3250C / \$65 

01



101 STRIPE SHORT  
599240 | SP3500C / \$70

01 04 09



101 HEATHER SHORT  
599238 | SP3500C / \$70

01 02 04 05 06 07 24 25 26



JACKPOT SHORT  
599246 | SP3250C / \$65

01



JACKPOT JOGGER  
530063 | SP4500C / \$90

01 02 04 05 07 12



JACKPOT 5 POCKET PANT  
599245 | SP4250C / \$85

01 02 04 05 06 08



JACKPOT PANT  
599243 | SP4250C / \$85

01 02 04 07



TAILORED JACKPOT PANT  
599244 | SP4250C / \$85

MEN'S

# ▶ Excellent Golf Wear



01  
Puma Black

## PUMA GOLF WEAR CIRCLE PATCH CAP

023023 | SP1750C / **\$35**      SIZE OS

96% Polyester, 4% Elastane



01 High Rise Heather  
03 Federal Blue Heather

50+  
UPF

LEFT  
HEM

## EGW CLOUDSPUN MAT HENLEY

599917 | SP3000C / **\$60**      S - 3XL

94% Polyester, 6% Elastane-Circular Knit



01 Puma Black Heather  
03 Federal Blue Heather

40  
UPF

LEFT  
HEM

## EGW CLOUDSPUN PUSHCART POCKET TEE

599275 | SP2250C / **\$45**      S - 3XL

94% Polyester, 6% Elastane-Circular Knit



01 Quiet Shade Heather  
02 Federal Blue Heather

50+  
UPF

LEFT  
HEM

## EGW CLOUDSPUN LONGSLEEVE HENLEY

531482 | SP3500C / **\$70**      S - 3XL

94% Polyester, 6% Elastane-Circular Knit



01 Puma Black Heather  
02 Federal Blue Heather

40  
UPF

LEFT  
CHEST

## EGW HOODED JACKET

531149 | SP5900C / **\$118**      S - 3XL

86% Polyester, 14% Elastane-Circular Knit



01 Puma Black Heather  
02 High Rise Heather  
04 Federal Blue Heather

40  
UPF

LEFT  
CHEST

## EGW CLOUDSPUN PM CREWNECK

530154 | SP4000C / **\$80**      S - 3XL

87% Polyester, 13% Elastane-Circular Knit



01 Puma Black  
03 High Rise  
04 Federal Blue

40  
UPF

## EGW WALKER SHORT

599271 | SP3000C / **\$60**      S - 3XL

89% Polyester, 11% Spandex-Woven



01 Puma Black  
02 High Rise

40  
UPF

## EGW 9-HOLE JOGGER

599272 | SP4250C / **\$85**      S - 3XL

89% Polyester, 11% Spandex-Woven



EGW

THE MAINS OF GOLF



# PUMA TRACKS



## X COLLECTION



01  
Puma Black /  
Bright White /  
Vibrant Orange



02  
Bright White /  
Puma Black /  
Vibrant Orange

### MOVING DAY X SNAPBACK CAP

023409 | SP1750C / \$35

SIZE OS

95% Polyester, 5% Elastane

03  
Bright White /  
Vibrant Orange

04  
High Rise /  
Vibrant Orange



50+  
UPF



### MATTR MOVING DAY POLO

599433 | SP4250C / \$85

S - 3XL

92% Polyester, 8% Elastane-Circular Knit

01  
High Rise

02  
Puma Black



50+  
UPF



### X CAMOUFLAGE POLO

531150 | SP4250C / \$85

S - 3XL

92% Polyester, 8% Elastane-Circular Knit

03  
High Rise



40  
UPF



### TECH PIQUE MOVING DAY POLO

599277 | SP4250C / \$85

S - 3XL

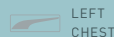
100% Polyester

03  
High Rise/  
Vibrant Orange

04  
Puma Black/  
Vibrant Orange



40  
UPF



### CLOUDSPUN MOVING DAY 1/4 ZIP

599559 | SP5000C / \$100

S - 3XL

87% Polyester, 13% Elastane-Circular Knit

01  
High Rise

02  
Puma Black



### X SHORT

531153 | SP4000C / \$80

WAIST 28-42, 33.  
100% Polyester

01  
High Rise

02  
Puma Black



### X PANT

531154 | SP4900C / \$98

WAIST 28-40, 33. INSEAM 30,32,34  
100% Polyester



# MATCH PLAY

02  
Navy Blazer /  
High Risk Red



LEFT  
SLEEVE

## MATTR STARS POLO

533238 | SP3750C / \$75

SIZE S - 3XL

92% Polyester, 8% Elastane

01  
Bright White /  
Navy Blazer



LEFT  
SLEEVE

01  
Navy Blazer / High  
Risk Red



LEFT  
CHEST

## MATTR ONE WAY POLO

599115 | SP3750C / \$75

SIZE S - 2XL

94% Polyester, 6% Elastane

10  
Navy Blazer Heather / High  
Risk Red



LEFT  
CHEST

## CLOUDSPUN MONARCH POLO

530991 | SP3250C / \$65

S - 3XL

94% Polyester, 6% Elastane

02  
Navy Blazer / High  
Risk Red



LEFT  
CHEST

## CLOUDSPUN TEAM TEE

533239 | SP1750C / \$35

S - 3XL

94% Polyester, 6% Elastane

07  
Navy Blazer Heather /  
High Risk Red



LEFT  
SLEEVE

## MATTR KIWI STRIPE POLO

599113 | SP3500C / \$70

S - 2XL

92% Polyester, 8% Elastane-Circular Knit

02  
Navy Blazer Heather /  
Bright White



BACK  
NECK

## CLOUDSPUN T7 1/4 ZIP

599129 | SP3750C / \$75

S - 3XL

87% Polyester, 13% Elastane-Circular Knit

01  
Navy Blazer / Bright  
White /  
High Risk Red



## MATCH PLAY USA P CAP

023653 | SP1750C / \$35

SIZE OS

95% Polyester, 5% Elastane

01  
Navy Blazer / Puma White /  
High Risk Red



## IGNITE PWRADAPT CAGED TEAM USA

376115 | SP10200C / \$170

7-13, 14, 15

01  
Navy Blazer /  
Royal Blue



## MATCH PLAY EUR P CAP

023654 | SP1750C / \$35

SIZE OS

95% Polyester, 5% Elastane



# UNITED WE STAND

VOLITION AMERICA

**PUMA Golf**, through its Volition America Golf Collection, is a proud supporter of the **Folds of Honor Foundation**, which provides educational scholarships to spouses and children of America's fallen and disabled service-members.



## VOLITION AMERICA



01  
Bright White / Navy Blazer /  
High Risk Red



01  
Bright White



02  
Navy Blazer

### VOLITION STARS SNAPBACK CAP

023737 | SP1600C / \$32

SIZE OS

95% Polyester, 5% Elastane

### VOLITION TACTICAL PATCH SNAPBACK CAP

023301 | SP1600C / \$32

SIZE OS

98% Cotton, 2% Elastane

01  
Bright  
White

02  
Navy  
Blazer



### VOLITION FLIGHT DECK POLO

531156 | SP4000C / \$80

S - 2XL

91% Polyester, 9% Elastane

01  
Bright White /  
Navy Blazer

02  
Quiet Shade Heather /  
High Risk Red



### MATR VOLITION GHILLIE POLO

599564 | SP3750C / \$75

S - 2XL

92% Polyester, 8% Elastane-Circular Knit



# VOLITION AMERICA

03 Navy Blazer  
01 High Risk Red  
02 Puma Black



50+  
UPF



## MATTR VOLITION FLANKED POLO

599434 | SP3750C / \$75

S - 3XL

92% Polyester, 8% Elastane-Circular Knit

01 Bright White  
02 Quiet Shade Heather



50+  
UPF



## MATTR VOLITION BANNER POLO

599435 | SP4000C / \$80

S - 2XL

92% Polyester, 8% Elastane-Circular Knit

02 Bright White  
01 Quiet Shade Heather



## MATTR VOLITION BETSY POCKET POLO

599436 | SP3750C / \$75

S - 3XL

92% Polyester, 8% Elastane-Circular Knit

01 Navy Blazer  
02 High Rise  
03 Zinfandel



50+  
UPF



## MATTR VOLITION BBQ POLO

599437 | SP3750C / \$75

S - 3XL

92% Polyester, 8% Elastane-Circular Knit

02 Elektro Blue  
01 Steel Gray



50+  
UPF



## MATTR VOLITION MAINPLANE POLO

599438 | SP4000C / \$80

S - 2XL

92% Polyester, 8% Elastane-Circular Knit

01  
Navy Blazer /  
Heather

02  
High Rise /  
Heather



50+  
UPF



**VOLITION UNITED WE STAND TEE**

532461 | SP1900C / \$38

S - 3XL

91% Polyester, 9% Elastane-Circular Knit

01  
Puma Black

02  
Navy Blazer



50+  
UPF



**VOLITION HOODIE**

531155 | SP4900C / \$98

S - 3XL

94% Polyester, 6% Elastane-Circular Knit

01  
Puma Black

02  
Navy Blazer



40  
UPF



**VOLITION FLANKED 1/4 ZIP**

599440 | SP4500C / \$90

S - 3XL

94% Polyester, 6% Elastane-Circular Knit

01  
Navy Blazer

02  
High Rise

03  
High Risk Red



40  
UPF



**VOLITION TRIED AND TRUE 1/4 ZIP**

599439 | SP4500C / \$90

S - 3XL

94% Polyester, 6% Elastane-Jersey

01  
Puma White / Navy Blazer /  
High Risk Red



**IGNITE FASTEN8 VOLITION STARS & STRIPES**

195581 | SP8400C / \$140

7-12, 13, 14

VOLITION

# MATTR Polos



50%  
OFF

LEFT  
SLEEVE



50%  
OFF

LEFT  
CHEST



50%  
OFF

LEFT  
SLEEVE



50%  
OFF

LEFT  
CHEST

## MATTR TOPO POLO

531095 | SP3500C / \$70 S - 3XL

92% Polyester, 8% Elastane - Circular Knit

## MATTR CARTS POLO

531093 | SP3500C / \$70 S - 3XL

92% Polyester, 8% Elastane-Circular Knit

## MATTR SNACK SHACK POLO

532116 | SP3750C / \$75 S - 3XL

92% Polyester, 8% Elastane-Circular Knit

## MATTR SIGNATURE REQUIRED POLO

532163 | SP3750C / \$75 S - 3XL

92% Polyester, 8% Elastane

### GREEN GRASS EXCLUSIVE COLOR

01 High Rise / Bright White  
D1



03 Bright White / Placid Blue  
D1



### GREEN GRASS EXCLUSIVE COLOR

02 Navy Blazer / Quiet Shade  
D1



03 Mazarine Blue / Placid Blue  
D1



01 Bright White / Placid Blue  
D1



02 Placid Blue  
D1



01 Bright White / Allure  
D2



02 Federal Blue / Navy Blazer  
D2





50% OFF

LEFT SLEEVE



50% OFF

LEFT CHEST



50% OFF

LEFT SLEEVE



50% OFF

LEFT SLEEVE

**MATTR PARADISE POLO**

531097 | SP3500C / \$70 S - 3XL

92% Polyester, 8% Elastane-Circular Knit

**MATTR MOVING DAY POLO**

599433 | SP4250C / \$85 S - 3XL

92% Polyester, 8% Elastane-Circular Knit

**MATTR STARS POLO**

533238 | SP3750C / \$75 S - 3XL

92% Polyester, 8% Elastane-Circular Knit

GREEN GRASS EXCLUSIVE STYLE

**MATTR FINE STRIPE POLO**

599123 | SP3750C / \$75 S - 3XL

94% Polyester, 6% Elastane

01 Bright White  
D3



GREEN GRASS EXCLUSIVE COLOR

02 Corydalis Blue  
D3



03 Bright White / Vibrant Orange



04 High Rise / Vibrant Orange



01 Bright White / Navy Blazer  
MATCH PLAY



02 Navy Blazer / High Risk Red  
MATCH PLAY



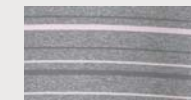
07 Navy Blazer  
Heather / High Rise  
D1, 2



09 Deep Lichen Green  
Heather / Allure  
D2



11 Quiet Shade Heather /  
Parfait Pink  
D3



08 Teaberry Heather /  
Mazarine Blue  
D1



10 Teal Heather / Corydalis  
Blue  
D3



# ▶ MATTR Polos



50+  
UP



LEFT  
SLEEVE



50+  
UP



LEFT  
CHEST

## MATTR LONGSLEEVE POLO

531719 | SP4000C / \$80 S - 3XL

92% Polyester, 8% Elastane-Circular Knit

# ▶ CLOUDSPUN™ Polos



50+  
UP



LEFT  
CHEST

## CLOUDSPUN MOWERS POLO

532162 | SP3750C / \$75 S - 3XL

94% Polyester, 6% Elastane-Circular Knit

### GREEN GRASS EXCLUSIVE STYLE MATTR KIWI STRIPE POLO

599113 | SP3500C / \$70 S - 2XL

92% Polyester, 8% Elastane-Circular Knit

07 Navy Blazer Heather /  
High Risk Red  
US OPEN



10 Placid Blue Heather  
/ Bright White  
D1



13 Teal Heather /  
Corydalis Blue  
D3



08 Puma Black Heather /  
Quiet ShadE  
D3



11 Deep Lichen Green  
Heather / Navy Blazer  
D2



09 Navy Blazer  
Heather / High Rise  
D1, 2



12 Mazarine Blue Heather /  
Navy Blazer  
D1



01 Puma Black Heather / Quiet Shade  
D3



02 Navy Blazer Heather / High Rise  
D1, 2



03 High Rise Heather / Navy Blazer  
D1, 2



### GREEN GRASS EXCLUSIVE COLOR

01 Bright White / High Rise  
D1



03 Bright White / Mazarine Blue  
D1







50% OFF

LEFT SLEEVE



50% OFF

LEFT CHEST



50% OFF

LEFT SLEEVE



50% OFF

LEFT CHEST

**CLOUDSPUN ATMOS POLO**

531094 | SP3750C / \$75 S - 3XL  
94% Polyester, 6% Elastane-Circular Knit

**CLOUDSPUN FEATHERS POLO**

531092 | SP3750C / \$75 S - 3XL  
94% Polyester, 6% Elastane-Circular Knit

**CLOUDSPUN LEAVES POLO**

532115 | SP3750C / \$75 S - 3XL  
94% Polyester, 6% Elastane

**CLOUDSPUN PLUMERIA POLO**

531096 | SP3750C / \$75 S - 3XL  
94% Polyester, 6% Elastane-Circular Knit

01 Bright White / Navy Blazer  
D2



GREEN GRASS EXCLUSIVE COLOR  
02 High Rise / Quiet Shade  
D2



01 Navy Blazer / Bright White  
D2



GREEN GRASS EXCLUSIVE COLOR  
02 Allure / Bright White  
D2



01 Bright White / Deep Teal  
D3



GREEN GRASS EXCLUSIVE COLOR  
03 Bright White / Parfait Pink  
D3



GREEN GRASS EXCLUSIVE COLOR

01 Quiet Shade / High Rise  
D3



02 Teal / Corydalis Blue  
D3



# ▶ CLOUDSPUN™ Polos



50+  
UPF



LEFT  
SLEEVE

**GREEN GRASS EXCLUSIVE STYLE**  
**CLOUDSPUN LEGEND POLO**

599928 | SP3500C / \$70

S - 3XL

94% Polyester, 6% Elastane-Circular Knit



50+  
UPF



LEFT  
CHEST  
LEFT  
SLEEVE

**CLOUDSPUN MONARCH POLO**

599117 LS / 530991 LC | SP3250C / \$65

S - 3XL, 4XL - 5XL\*

94% Polyester, 6% Elastane-Circular Knit

**01 Navy Blazer**  
D1, D2



**13 Deep Lichen Green**  
D2



**10 Puma Black**  
D3



**14 Federal Blue**  
D2



**11 Placid Blue**  
D1



**15 Teal**  
D3



**12 Teaberry**  
D1



**16 Corydalis Blue**  
D3



**01\* Puma Black**  
Heather / High Rise  
D3



**12 Teaberry Heather / Navy**  
Blazer  
D1



**16 Teal Heather /**  
High Rise  
D3



**02\* High Rise Heather /**  
Navy Blazer  
D1, 2



**13 Placid Blue**  
Heather / Navy Blazer  
D1



**17 Parfait Pink**  
Heather / Quiet Shade  
D3



**09\* Navy Blazer Heather /**  
High Rise  
D1, 2



**14 Deep Lichen Green**  
Heather / Navy Blazer  
D2



**10 Navy Blazer**  
Heather / High Risk Red  
US OPEN



**15 Federal Blue Heather /**  
High Rise  
D2



# Polos

02



## CLOUDSPUN TEAM TEE

533239 | SP1750C / \$35

94% Polyester, 6% Elastane

S - 3XL

#	COLOR	ESS	D1	D2	D3	TOUR
02	Navy Blazer / High Risk Red					•

01

02



## X CAMOUFLAGE POLO

531150 | SP4250C / \$85

92% Polyester, 8% Elastane-Circular Knit

S - 3XL

#	COLOR	ESS	D1	D2	D3	TOUR
01	High Rise					•
02	Puma Black					•

03



## TECH PIQUE MOVING DAY POLO

599277 | SP4250C / \$85

100% Polyester-Circular Knit

S - 3XL

#	COLOR	ESS	D1	D2	D3	TOUR
03	High Rise					•

01

02

03

04

45

49

50



## GREEN GRASS EXCLUSIVE STYLE ROTATION POLO

577875 | SP2750C / \$55

100% Polyester

S - 3XL, 4XL-5XL\*

#	COLOR	ESS	D1	D2	D3	TOUR
01*	Bright White	•	•	•	•	
02*	Puma Black				•	
03*	Peacoat	•	•	•		
04*	Quarry	•	•	•	•	
45	Teaberry		•			

#	COLOR	ESS	D1	D2	D3	TOUR
49	MAZARINE BLUE		•			
50	CORYDALIS BLUE				•	

# ▶ CLOUDSPUN™ Layering



40  
UPF

LEFT  
CHEST

## CLOUDSPUN STLTH 1/4 ZIP

597588 | SP4000C / \$80

S - 3XL

87% Polyester, 13% Elastane-Circular Knit



40  
UPF

BACK  
NECK

GREEN GRASS EXCLUSIVE STYLE

## CLOUDSPUN T7 1/4 ZIP

599129 | SP3750C / \$75

S - 3XL

87% Polyester, 13% Elastane-Circular Knit



40  
UPF

BACK  
NECK

## CLOUDSPUN T7 VEST

599130 | SP3500C / \$70

S - 3XL

87% Polyester, 13% Elastane-Circular Knit



40  
UPF

LEFT  
CHEST  
LEFT  
SLEEVE

## CLOUDSPUN CREWNECK

531279 LS / 597596 LC | SP3500C / \$70

S - 3XL, 4XL - 5XL\*

87% Polyester, 13% Elastane-Circular Knit

01 Puma Black  
Heather  
D3



09 High Rise Heather  
D1, 2



08 Navy Blazer  
Heather  
D1, 2



14 Bright White  
D1, 2, 3



01 Puma Black Heather /  
Quiet Shade  
D3



10 Federal Blue Heather /  
Bright White  
D2



14 High Rise Heather /  
Quiet Shade Heather  
D1, 2, 3



02 Navy Blazer Heather /  
Bright White  
D1, 2



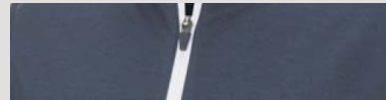
11 Deep Teal Heather /  
Bright White  
D3



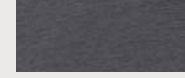
01 Puma Black Heather / Quiet Shade  
D3



02 Navy Blazer Heather / Bright White  
D1, 2



05\*/01 Puma Black  
Heather  
D3



01\*/08 Navy Blazer  
Heather  
D1, 2



17 Persian Red Heather  
D1



20 Teal Heather  
D3



02\*/04 High Rise Heather  
D1, 2, 3



06/18 Deep Lichen Green  
Heather  
D2



19 Federal Blue Heather  
D2





40 UPF



LEFT CHEST



40 UPF



LEFT CHEST



40 UPF



LEFT CHEST

### CLOUDSPUN WRMLBL JACKET

531099 | SP8000C / \$160

S - 3XL

Body: 100% Polyester, Sleeves/Side: 81% Polyester, 19% Elastane

### CLOUDSPUN WRMLBL VEST

531100 | SP6000C / \$120

S - 3XL

Body: 100% Polyester, Side: 81% Polyester, 19% Elastane

### CLOUDSPUN MOVING DAY 1/4 ZIP

599559 | SP5000C / \$100

S - 3XL

87% Polyester, 13% Elastane-Circular Knit

01 Puma Black  
D3



02 Navy Blazer  
D2



01 Puma Black  
D3



02 Navy Blazer  
D2



03 High Rise / Vibrant Orange



04 Puma Black / Vibrant Orange



# ▶ Layering



LEFT CHEST

## BASELAYER

597598 | SP2500C / \$50

92% Polyester, 8% Elastane

S - 3XL

#	COLOR	ESS	D1	D2	D3	TOUR
01	Puma Black	•			•	
02	Bright White	•	•	•	•	



LEFT SLEEVE

## FIRST MILE WIND JACKET

599128 | SP5000C / \$100

100% Polyester Recycled-Woven

S - 3XL

#	COLOR	ESS	D1	D2	D3	TOUR
01	Bright White / High Rise		•	•	•	
02	Puma Black / Quiet Shade				•	
03	Navy Blazer / High Rise		•	•		



LEFT CHEST

## RIVERWALK WIND JACKET

599237 | SP5000C / \$100

100% Polyester-Circular Knit

S - 3XL

#	COLOR	ESS	D1	D2	D3	TOUR
01	Black / Quiet Shade					•
04	High Rise / Navy Blazer			•	•	
05	Navy Blazer / Bright White		•	•		



LEFT SLEEVE

## ROTATION 1/4 ZIP

577900 | SP3250C / \$65

94% Polyester, 6% Elastane

S - 3XL, 4XL - 5XL\*

#	COLOR	ESS	D1	D2	D3
01*	Puma Black	•			•
02*	Bright White	•	•	•	•
03*	Medium Gray Heather	•			•
04*	Peacoat	•	•	•	
16	Deep Lichen Green			•	
36	Mazarine Blue		•		
39	Corydalis Blue				•



LEFT CHEST

## ULTRADRY JACKET

595415 | SP14000C / \$280

100% Nylon

S - 3XL

#	COLOR	ESS
01	Puma Black / Quiet Shade / Acid Lime	•



## ULTRADRY PANT

595416 | SP11000C / \$220

100% Nylon

S - 3XL

#	COLOR	ESS
01	Puma Black / Quiet Shade	•

# ▶ Bottoms

01 02 06



01 02 04 09



01 02



## 101 STRIPE SHORT

599240 | SP3500C / \$70

86% Polyester, 14% Elastane-Woven

WAIST 28-42, 33

#	COLOR	ESS	D1	D2	D3	TOUR
01	Puma Black Heather					•
02	High Rise Heather		•	•	•	
06	Persian Red Heather		•			

## 101 HEATHER SHORT

599238 | SP3500C / \$70

91% Polyester, 9% Elastane-Woven

WAIST 28-42, 33

#	COLOR	ESS	D1	D2	D3	TOUR
01	Puma Black Heather					•
02	Navy Blazer Heather			•	•	
04	High Rise Heather			•	•	•
09	Antique Bronze Heather			•	•	•

## X SHORT

531153 | SP4000C / \$80

100% Polyester-Woven

WAIST 28-42, 33

#	COLOR	ESS	D1	D2	D3	TOUR
01	High Rise					•
02	Puma Black					•

01 02 03 04 05 06 07 17 18 21 23 24 25 26



## JACKPOT SHORT

599246 | SP3250C / \$65

100% Polyester Woven

WAIST 28-42, 33

#	COLOR	ESS	D1	D2	D3	TOUR
01	Puma Black	•				•
02	Bright White	•	•	•	•	
03	Navy Blazer	•	•	•		
04	Quiet Shade	•	•	•	•	
05	High Rise	•	•	•	•	

#	COLOR	ESS	D1	D2	D3	TOUR
06	White Pepper	•	•	•	•	
07	Antique Bronze	•		•	•	
17	Mazarine Blue			•		
18	Persian Red		•			
21	Deep Lichen Green				•	

#	COLOR	ESS	D1	D2	D3	TOUR
23	Allure			•		
24	Teal					•
25	Corydalis Blue					•
26	Parfait Pink					•

# JACKPOT Pants



50+  
UPF

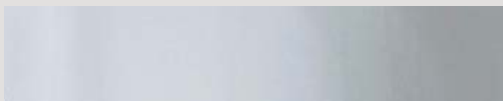
## X PANT

531154 | SP4900C / \$98

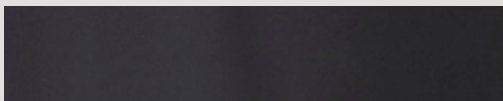
WAIST 28-40, 33. INSEAM 30, 32, 34

100% Polyester Woven

01 High Rise  
X COLLECTION



02 Puma Black  
X COLLECTION



50+  
UPF

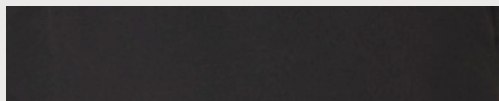
## JACKPOT JOGGER

530063 | SP4500C / \$90

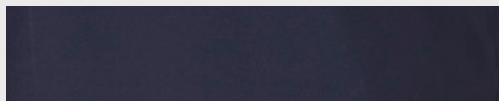
WAIST 28-40, 33. INSEAM 32

100% Polyester Woven

01 Puma Black  
D3



02 Navy Blazer  
D1, 2



50+  
UPF

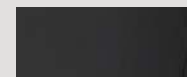
## JACKPOT 5 POCKET PANT

599245 | SP4250C / \$85

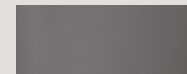
WAIST 28-40, 33. INSEAM 30, 32, 34

100% Polyester Woven

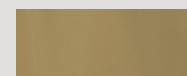
01 Puma Black  
ESS, D3



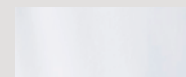
04 Quiet Shade  
ESS, D1, 2, 3



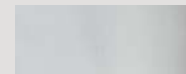
07 Antique Bronze  
ESS, D1, 2, 3



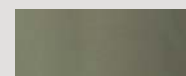
02 Bright White  
ESS, D1, 2, 3



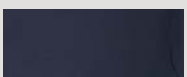
05 High Rise  
ESS, D1, 2, 3



12 Deep Lichen Green  
ESS, D1, 2, 3



03 Navy Blazer  
ESS, D1, 2







50+  
OFF

**JACKPOT PANT**

599243 | SP4250C / **\$85**      WAIST 28-40, 33. INSEAM 30, 32, 34

100% Polyester Woven



50+  
OFF

**TAILORED JACKPOT PANT**

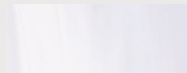
599244 | SP4250C / **\$85**      WAIST 28-40, 33. INSEAM 30, 32, 34

100% Polyester Woven

**01 Puma Black**  
ESS, D3



**02 Bright White**  
ESS, D1, 2, 3



**03 Navy Blazer**  
ESS, D1, 2



**04 High Rise**  
ESS, D1, 2, 3



**05 White Pepper**  
ESS, D1, 2, 3



**06 Antique Bronze**  
ESS, D1, 2, 3



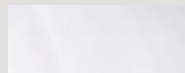
**08 Quiet Shade**  
ESS, D1, 2, 3



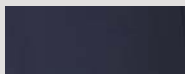
**01 Puma Black**  
ESS, D3



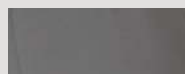
**02 Bright White**  
ESS, D1, 2, 3



**03 Navy Blazer**  
ESS, D1, 2



**04 Quiet Shade**  
ESS, D1, 2, 3



**07 Antique Bronze**  
ESS, D1, 2, 3



PUSH PLAY



PUSH PLAY



PUSH PLAY



PUSH PLAY



PUSH PLAY





# Women's Apparel

# D1 Colorflow Overview



02  
W'S SPORT CAP  
023237 | SP1200C / \$24



02  
W P CAP ADJUSTABLE  
023234 | SP1300C / \$26



01  
WOMEN'S CHELSEA P  
ADJUSTABLE CAP  
023414 | SP1400C / \$28



02  
WOMEN'S CHELSEA P  
ADJUSTABLE CAP  
023414 | SP1400C / \$28



01 02  
W MATTR DISPERSION POLO  
531201 | SP3000C / \$60



01 02  
W CLOUDSPUN CHELSEA SLEEVELESS POLO  
531157 | SP2750C / \$55



01 02  
W CLOUDSPUN CONCRETE SLEEVELESS POLO  
532101 | SP2750C / \$55



09 10 17 19 21  
CLOUDSPUN FREE POLO  
597695 | SP3000C / \$60



02 03 08 09 10  
MATTR SPRINTER SLEEVELESS POLO  
599252 | SP2750C / \$55



03  
W MATTR TECH TANK  
599251 | SP2250C / \$45



01 14 18  
W ROTATION POLO  
595822 | SP2500C / \$50



01 14 18  
ROTATION SLEEVELESS POLO  
595823 | SP2250C / \$45



02 08  
LONGSLEEVE SUN CREW  
577901 | SP3000C / \$60



01 02 06  
FARLEY DRESS  
599249 | SP4000C / \$80



02  
W CLOUDSPUN 1/4 ZIP BOMBER  
531229 | SP4000C / \$80



03 04  
W CLOUDSPUN HOODIE  
531204 | SP3750C / \$75



02 03  
W CLOUDSPUN FULL ZIP  
599265 | SP4000C / \$80



02 03  
W CLOUDSPUN FULL ZIP VEST  
599266 | SP3750C / \$75

Navy Blazer

Mazarine Blue

Teaberry

Placid Blue



07 08 10 11  
W CLOUDSPUN 1/4 ZIP  
597712 | SP3500C / \$70



02 03 04  
W CLOUDSPUN CREWNECK  
599267 | SP3500C / \$70



03 04  
W RIBBON SWEATER  
599268 | SP4000C / \$80



04 02  
W FIRST MILE WIND JACKET  
530155 | SP4500C / \$90



10 11 17 18  
W MESH 1/4 ZIP  
595848 | SP3500C / \$70



01 02 15 19  
W ROTATION 1/4 ZIP  
577943 | SP3250C / \$65



01 02  
PWRSHAPE DOT SKIRT  
531236 | SP3750C / \$75



02 19 26 27  
PWRSHAPE SOLID WOVEN SKIRT (16" & 18")  
595853 | SP3250C / \$65



04  
W ELASTIC SHORT  
595858 | SP3500C / \$70



02 22 28 30  
POUNCE BERMUDA  
577944 | SP3250C / \$65



03  
W DEL MAR JOGGER  
599263 | SP3750C / \$75



02 05  
W GOLF PANT  
596630 | SP4000C / \$80



02 11  
PWRSHAPE PANT  
595859 | SP4000C / \$80



02 09  
PWRSHAPE CAPRI  
595860 | SP3750C / \$75



02  
W PRINT TIGHT  
531245 | SP3500C / \$70

WOMEN'S

# D2 Colorflow Overview

07



W'S SPORT CAP  
023237 | SP1200C / \$24

02



W'S SPORT CAP  
023237 | SP1200C / \$24

04



WOMEN'S REMOVABLE POM  
P BEANIE  
023623 | SP1300C / \$26

02



W'S SPORT VISOR  
023238 | SP1100C / \$22

01

02



W CLOUDSPUN CAMO POLO  
531202 | SP3000C / \$60

03

04



W CLOUDSPUN CONCRETE SLEEVELESS POLO  
532101 | SP2750C / \$55

09

10

20

22



CLOUDSPUN FREE POLO  
597695 | SP3000C / \$60

02

03

11

12



MATRR SPRINTER SLEEVELESS POLO  
599252 | SP2750C / \$55

03



W MATRR TECH TANK  
599251 | SP2250C / \$45

01

14



W ROTATION POLO  
595822 | SP2500C / \$50

01

14



ROTATION SLEEVELESS POLO  
595823 | SP2250C / \$45

02

08



LONGSLEEVE SUN CREW  
577901 | SP3000C / \$60

01

02



FARLEY DRESS  
599249 | SP4000C / \$80

02



W CLOUDSPUN WRMLBL JACKET  
531232 | SP8000C / \$160

02



W CLOUDSPUN WRMLBL VEST  
531233 | SP6000C / \$120

02



W CLOUDSPUN 1/4 ZIP BOMBER  
531229 | SP4000C / \$80

03

05



W CLOUDSPUN HOODIE  
531204 | SP3750C / \$75

02

03



W CLOUDSPUN FULL ZIP  
599265 | SP4000C / \$80

Navy Blazer

Deep Teal

Teal

Caramel Cream

Salmon Buff

02 03



W CLOUDSPUN FULL ZIP VEST  
599266 | SP3750C / \$75



07 09 11



W CLOUDSPUN 1/4 ZIP  
597712 | SP3500C / \$70



02 03 04



W CLOUDSPUN CREWNECK  
599267 | SP3500C / \$70



03



W RIBBON SWEATER  
599268 | SP4000C / \$80



02 04



W FIRST MILE WIND JACKET  
530155 | SP4500C / \$90



19 20 10 11



W MESH 1/4 ZIP  
595848 | SP3500C / \$70



01 02 15



W ROTATION 1/4 ZIP  
577943 | SP3250C / \$65



01 02



PWRSHAPE CAMO SKIRT  
531237 | SP3750C / \$75

02 19 28 29



PWRSHAPE SOLID WOVEN SKIRT (16" & 18")  
595853 | SP3250C / \$65

04



W ELASTIC SHORT  
595858 | SP3500C / \$70

02 22 29



POUNCE BERMUDA  
577944 | SP3250C / \$65

03



W DEL MAR JOGGER  
599263 | SP3750C / \$75

02 05



W GOLF PANT  
596630 | SP4000C / \$80

02 11



PWRSHAPE PANT  
595859 | SP4000C / \$80

02 09



PWRSHAPE CAPRI  
595860 | SP3750C / \$75

02 03



W PRINT TIGHT  
531245 | SP3500C / \$70

WOMEN'S

# D3 Colorflow Overview



W P CAP ADJUSTABLE  
023234 | SP1300C / \$26



W'S SPORT CAP  
023237 | SP1200C / \$24



W'S SPORT VISOR  
023238 | SP1100C / \$22



WOMEN'S REMOVABLE POM  
P BEANIE  
023623 | SP1300C / \$26



W MATTR GREENERY POLO  
531200 | SP3000C / \$60



W CLOUDSPUN TROPICAL POLO  
531203 | SP3000C / \$60



W CLOUDSPUN CONCRETE SLEEVELESS POLO  
532101 | SP2750C / \$55



CLOUDSPUN FREE POLO  
597695 | SP3000C / \$60



MATTR SPRINTER SLEEVELESS POLO  
599252 | SP2750C / \$55



W MATTR TECH TANK  
599251 | SP2250C / \$45



W ROTATION POLO  
595822 | SP2500C / \$50



ROTATION SLEEVELESS POLO  
595823 | SP2250C / \$45



LONGSLEEVE SUN CREW  
577901 | SP3000C / \$60



FARLEY DRESS  
599249 | SP4000C / \$80



W CLOUDSPUN WRMLBL JACKET  
531232 | SP8000C / \$160



W CLOUDSPUN WRMLBL VEST  
531233 | SP6000C / \$120



W CLOUDSPUN 1/4 ZIP BOMBER  
531229 | SP4000C / \$80



W CLOUDSPUN HOODIE  
531204 | SP3750C / \$75



02 03



W CLOUDSPUN FULL ZIP  
599265 | SP4000C / \$80

02 03



W CLOUDSPUN FULL ZIP VEST  
599266 | SP3750C / \$75

07 11



W CLOUDSPUN 1/4 ZIP  
597712 | SP3500C / \$70

02 03 04



W CLOUDSPUN CREWNECK  
599267 | SP3500C / \$70

03 05



W RIBBON SWEATER  
599268 | SP4000C / \$80

02 04



W FIRST MILE WIND JACKET  
530155 | SP4500C / \$90

10 11 21



W MESH 1/4 ZIP  
595848 | SP3500C / \$70

01 02 15 21



W ROTATION 1/4 ZIP  
577943 | SP3250C / \$65

02 19 30 31



PWRSHAPE SOLID WOVEN SKIRT (16" & 18")  
595853 | SP3250C / \$65

04



W ELASTIC SHORT  
595858 | SP3500C / \$70

02 22 31



POUNCE BERMUDA  
577944 | SP3250C / \$65

03



W DEL MAR JOGGER  
599263 | SP3750C / \$75

02 05



W GOLF PANT  
596630 | SP4000C / \$80

02 11



PWRSHAPE PANT  
595859 | SP4000C / \$80

02 09



PWRSHAPE CAPRI  
595860 | SP3750C / \$75

02



W PRINT TIGHT  
531245 | SP3500C / \$70

# MATTR Polos



50+  
UPF



LEFT HEM

## W MATTR DISPERSION POLO

531201 | SP3000C / \$60

XS-2XL

92% Polyester, 8% Elastane - Circular Knit



50+  
UPF



LEFT HEM

## W MATTR GREENERY POLO

531200 | SP3000C / \$60

XS-2XL

92% Polyester, 8% Elastane-Circular Knit



50+  
UPF



LEFT HEM

## W MATTR TECH TANK

599251 | SP2250C / \$45

XS-2XL

92% Polyester, 2% Elastane-Circular Knit

### 01 Bright White / Navy Blazer

D1



### 02 Navy Blazer / Mazarine Blue

D1



### 01 Navy Blazer

D3



### 02 Bright White

D3



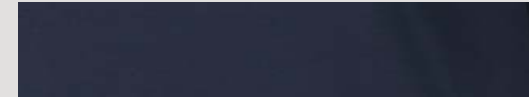
### 01 Puma Black / Grey

ESS



### 03 Navy Blazer / Grey

D1,2,3





50+  
UPF  
  
LEFT HEM

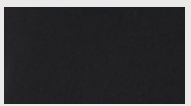
**MATTR SPRINTER SLEEVELESS POLO**

599252 | SP2750C / \$55

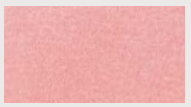
XS-2XL

100% Polyester -Circular Knit

**01 Puma Black**  
ESS



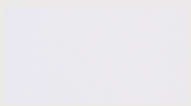
**09 Teaberry Heather**  
D1



**13 Fair Aqua Heather**  
D3



**02 Bright White**  
D1,2,3



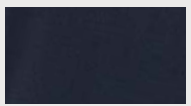
**10 Placid Blue Heather**  
D1



**14 Parfait Pink Heather**  
D3



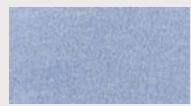
**03 Navy Blazer**  
D1, 2, 3



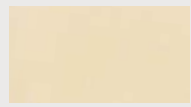
**11 Teal Heather**  
D2



**08 Mazarine Blue Heather**  
D1



**12 Caramel Cream Heather**  
D2



**CLOUDSPUN™ Polos**



50+  
UPF



LEFT HEM



50+  
UPF



LEFT HEM



50+  
UPF



LEFT HEM

**W CLOUDSPUN CAMO POLO**

531202 | SP3000C / \$60

XS-2XL

94% Polyester, 6% Elastane-Circular Knit

**W CLOUDSPUN TROPICAL POLO**

531203 | SP3000C / \$60

XS-2XL

94% Polyester, 6% Elastane-Circular Knit

**W CLOUDSPUN CHELSEA SLEEVELESS POLO**

531157 | SP2750C / \$55

XS-2XL

94% Polyester, 6% Elastane-Circular Knit

01 Deep Teal  
D2



02 TEAL  
D2



02 Corydalis Blue  
D3



03 Parfait Pink  
D3



01 Navy Blazer  
D1



02 Teaberry  
D1





50+  
UPF



LEFT HEM

### W CLOUDSPUN CONCRETE SLEEVELESS POLO

532101 | SP2750C / \$55

XS-2XL

94% Polyester, 6% Elastane-Circular Knit



50+  
UPF



LEFT HEM

### CLOUDSPUN FREE POLO

597695 | SP3000C / \$60

XS-2XL

94% Polyester, 6% Elastane-Circular Knit

01 Navy Blazer  
D1



04 Caramel Cream  
D2



02 Placid Blue  
D1



05 Corydalis Blue  
D3



03 Teal  
D2



06 Parfait Pink  
D3



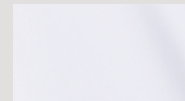
08 Puma Black Heather  
ESS



20 Deep Teal Heather  
D2



09 Bright White  
D1,2,3



21 Teaberry Heather  
D1



10 Navy Blazer Heather  
D1, 2, 3



22 Salmon Buff  
Heather  
D2



17 Mazarine Blue Heather  
D1



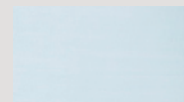
23 Parfait Pink  
Heather  
D3



19 Placid Blue  
Heather  
D1



24 Corydalis Blue  
Heather  
D3



# ▶ Polos

01 02 14 18



## W ROTATION POLO

595822 | SP2500C / \$50

100% Polyester

XS-2XL

#	COLOR	ESS	D1	D2	D3	TOUR
01	Bright White	•	•	•	•	
02	Puma Black	•				
14	Navy Blazer	•	•	•	•	
18	Mazarine Blue		•			

01 02 14 18



## ROTATION SLEEVELESS POLO

595823 | SP2250C / \$45

100% Polyester

XS-2XL

#	COLOR	ESS	D1	D2	D3	TOUR
01	Bright White	•	•	•	•	
02	Puma Black	•				
14	Navy Blazer	•	•	•	•	
18	Mazarine Blue		•			

01 02 08



## W LONGSLEEVE SUN CREW

577901 | SP3000C / \$60

92% Polyester, 8% Elastane-Circular Knit

XS-2XL

#	COLOR	ESS	D1	D2	D3	TOUR
01	Puma Black	•				
02	Bright White		•	•	•	
08	Navy Blazer		•	•	•	

01 02 06 07



## FARLEY DRESS

599249 | SP4000C / \$80

100% Polyester

XS-2XL

#	COLOR	ESS	D1	D2	D3	TOUR
01	Bright White		•	•	•	
02	Navy Blazer		•	•	•	
06	Teaberry		•			
07	Fair Aqua				•	

# ▶ CLOUDSPUN™ Layering



40 UPF  LEFT CUFF

## W CLOUDSPUN WRMLBL JACKET

531232 | SP8000C / \$160 XS-2XL

Body: 100% Polyester, Sleeves/Side: 81% Polyester, 19% Elastane



40 UPF  LEFT HEM

## W CLOUDSPUN WRMLBL VEST

531233 | SP6000C / \$120 XS-2XL

Body: 100% Polyester, Side: 81% Polyester, 19% Elastane



40 UPF  LEFT HEM

## W CLOUDSPUN 1/4 ZIP BOMBER

531229 | SP4000C / \$80 XS-2XL

87% Polyester, 13% Elastane-Circular Knit



50+ UPF  LEFT HEM

## W CLOUDSPUN HOODIE

531204 | SP3750C / \$75 XS-2XL

87% Polyester, 13% Elastane

01 Puma Black  
ESS



02 Navy Blazer  
D2, 3



01 Puma Black  
ESS



02 Navy Blazer  
D2, 3



01 Puma Black Heather  
ESS



02 Navy Blazer Heather  
D1, 2, 3



01 Puma Black Heather  
ESS



04 Teaberry  
Heather  
D1



03 Navy Blazer Heather  
D1, 2, 3



05 Salmon Buff  
Heather  
D2



WOMEN'S

# ▶ CLOUDSPUN™ Layering



50+  
UPF



LEFT HEM

## W CLOUDSPUN 1/4 ZIP

597712 | SP3500C / \$70

XS-2XL

90% Polyester, 10% Elastane



40  
UPF



LEFT HEM

## W CLOUDSPUN FULL ZIP

599265 | SP4000C / \$80

XS-2XL

87% Polyester, 13% Elastane-Circular Knit



40  
UPF



LEFT HEM

## W CLOUDSPUN FULL ZIP VEST

599266 | SP3750C / \$75

XS-2XL

87% Polyester, 13% Elastane-Circular Knit



40  
UPF



LEFT HEM

## W CLOUDSPUN CREWNECK

599267 | SP3500C / \$70

XS-2XL

87% Polyester, 13% Elastane-Circular Knit

07 Navy Blazer  
D1, 2, 3



08 Placid Blue  
D1



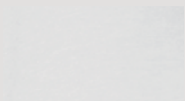
10 Teaberry  
D1



09 Deep teal  
D2



11 Bright White  
D1, 2, 3



01 Puma Black Heather  
ESS



02 Light Gray Heather  
D1, 2, 3



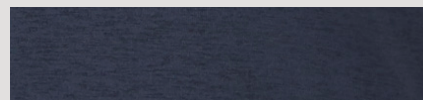
03 Navy Blazer Heather  
D1, 2, 3



02 Light Gray Heather  
D1, 2, 3



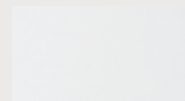
03 Navy Blazer Heather  
D1, 2, 3



01 Puma Black Heather  
ESS



02 Bright White  
D1, 2, 3



03 Light Gray Heather  
D1, 2, 3



04 Navy Blazer Heather  
D1, 2, 3





# ▶ Layering



LEFT CUFF

**W RIBBON SWEATER** 599268 | SP4000C / \$80

60% Cotton, 40% Polyester-Flat Knit XS-2XL

#	COLOR	ESS	D1	D2	D3
03	Bright White / Navy Blazer		•	•	•
04	Bright White / Teaberry		•		
05	Parfait Pink / Fair Aqua				•



FIRST MILE  
LEFT CUFF

**W FIRST MILE WIND JACKET** 530155 | SP4500C / \$90

100% Polyester Recycled-Woven XS-2XL

#	COLOR	ESS	D1	D2	D3
01	Puma Black		•		
02	Bright White			•	•
04	Navy Blazer / Bright White			•	•



LEFT HEM

**W MESH 1/4 ZIP** 595848 | SP3500C / \$70

100% Polyester-Circular Knit XS-2XL

#	COLOR	ESS	D1	D2	D3
01	Puma Black		•		
10	Bright White			•	•
11	Navy Blazer			•	•
17	Teaberry			•	
18	Placid Blue			•	
19	Teal				•
20	Salmon Buff				•
21	Parfait Pink				•



40 UPF

LEFT CUFF

**W ROTATION 1/4 ZIP** 577943 | SP3250C / \$65

94% Polyester, 6% Elastane XS-2XL

#	COLOR	ESS	D1	D2	D3
01	Bright White		•	•	•
02	Medium Gray Heather		•	•	•
04	Puma Black		•		
15	Navy Blazer		•	•	•
19	Mazarine Blue		•		



LEFT CHEST

**ULTRADRY JACKET** 595417 | SP7500C / \$150

100% Nylon XS-2XL

#	COLOR	ESS
01	Puma Black / Quiet Shade / Azalea	•



**ULTRADRY PANT** 595418 | SP7500C / \$150

100% Nylon XS-2XL

#	COLOR	ESS
01	Puma Black	•

# PWRSHAPE Skirts



50%  
OFF

16"  
LENGTH



50%  
OFF

16"  
LENGTH



50%  
OFF

16"  
LENGTH

18"  
LENGTH

## PWRSHAPE DOT SKIRT

531236 | SP3750C / \$75

2XS-2XL

86% Polyester, 14% Elastane

## PWRSHAPE CAMO SKIRT

531237 | SP3750C / \$75

2XS-2XL

86% Polyester, 14% Elastane

## PWRSHAPE SOLID WOVEN SKIRT

595853 | SP3250C / \$65

2XS-2XL

86% Polyester, 14% Elastane

01 Bright White  
D1



02 Navy Blazer  
D1



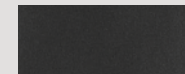
01 Deep Teal  
D2



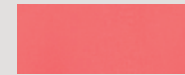
02 Teal  
D2



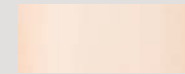
01 Puma Black  
ESS



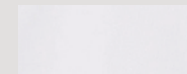
26 Teaberry  
D1



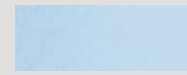
29 Caramel Cream  
D2



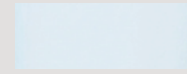
02 Bright White  
D1, 2, 3



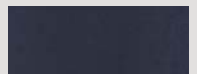
27 Placid Blue  
D1



30 Corydalis Blue  
D3



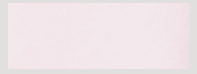
19 Navy Blazer  
D1, 2, 3



28 Deep Teal  
D2



31 Parfait Pink  
D3



# ▶ Shorts



50+  
UPF



50+  
UPF

## W ELASTIC SHORT

595858 | SP3500C / \$70

2XS-2XL

100% Polyester-Woven

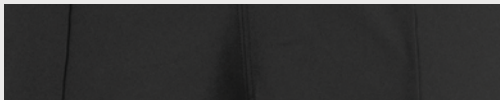
## POUNCE BERMUDA

577944 | SP3250C / \$65

2XS-2XL

100% Polyester-Woven

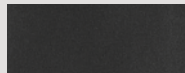
**01 Puma Black**  
ESS



**04 Navy Blazer**  
ESS, D1, 2, 3



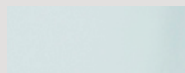
**01 Puma Black**  
ESS



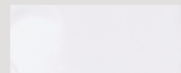
**28 Mazarine Blue**  
D1



**31 Fair Aqua**  
D3



**02 Bright White**  
ESS, D1, 2, 3



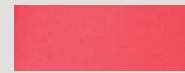
**29 Teal**  
D2



**22 Navy Blazer**  
ESS, D1, 2, 3



**30 Teaberry**  
D1



# ▶ PWRSHAPE Pants



## PWRSHAPE PANT

595859 | SP4000C / \$80

2XS-2XL

90% Polyester, 10% Elastane-Woven

## PWRSHAPE CAPRI

595860 | SP3750C / \$75

2XS-2XL

90% Polyester, 10% Elastane-Woven

# ▶ Pants



## W DEL MAR JOGGER

599263 | SP3750C / \$75

XS-2XL

89% Polyester, 11% Elastane

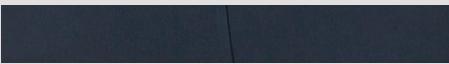
01 Puma Black  
ESS



02 Bright White  
ESS, D1, 2, 3



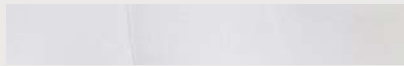
11 Navy Blazer  
ESS, D1, 2, 3



01 Puma Black  
ESS



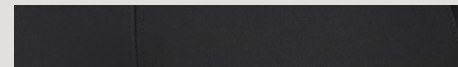
02 Bright White  
ESS, D1, 2, 3



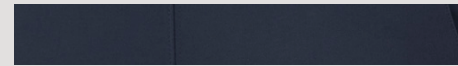
09 Navy Blazer  
ESS, D1, 2, 3



01 Puma Black  
ESS



03 Navy Blazer  
D1, 2, 3





50+  
UPF



50+  
UPF

### W GOLF PANT

596630 | SP4000C / \$80

XS-2XL

90% Polyester, 10% Elastane-Woven

### W PRINTED TIGHT

531245 | SP3500C / \$70

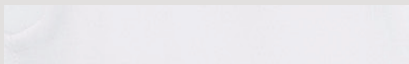
XS-2XL

77% Polyester, 23% Elastane

01 Puma Black  
ESS



02 Bright White  
ESS, D1, 2, 3



05 Navy Blazer  
ESS, D1, 2, 3



01 Puma Black / Leopard  
ESS



02 Navy Blazer / Leopard  
D1, 2, 3



03 Deep Teal / Concrete  
D2



PUSH  
PLAY



PUSH  
PLAY



PUSH  
PLAY



PUSH  
PLAY



PUSH  
PLAY





# Junior's Apparel

# Junior's Overview

## ► Boy's



YOUTH MINI GOLF P 110 SNAPBACK CAP  
023416 | SP1100C / \$22



YOUTH MINI GOLF P 110 SNAPBACK CAP  
023416 | SP1100C / \$22




YOUTH P CAP  
022697 | SP1000C / \$20




YOUTH P CAP  
022697 | SP1000C / \$20




BOYS MATTR TOPO POLO  
532421 | SP2000C / \$40 




BOYS MATTR SNACK SHACK POLO  
532420 | SP2000C / \$40 




BOYS MATTR KIWII STRIPE POLO  
530667 | SP2250C / \$45 




BOYS CLOUDSPUN MONARCH POLO  
530669 | SP2000C / \$40 




BOYS ESSENTIAL POLO  
578133 | SP1500C / \$30 




BOYS FULL ZIP JACKET  
595452 | SP3000C / \$60 




BOYS CLOUDSPUN CREWNECK  
530670 | SP2750C / \$55 



BOYS 1/4 ZIP  
578139 | SP2500C / \$50 



BOYS FIRST MILE WIND JACKET  
530671 | SP3250C / \$65 



BOYS STRETCH SHORT  
598675 | SP2250C / \$45



BOYS 5 POCKET PANT  
530672 | SP3000C / \$60



# ► Girl's

01



GIRL'S SPORT CAP  
023241 | SP900C / \$18

04



GIRL'S SPORT CAP  
023241 | SP900C / \$18

06



GIRL'S SPORT CAP  
023241 | SP900C / \$18

01 02



GIRLS MATTR GREENERY POLO  
532422 | SP1750C / \$35



01 05 06



GIRLS CLOUDSPUN FREE POLO  
530673 | SP2000C / \$40



03 12



GIRLS ESSENTIAL POLO  
578136 | SP1500C / \$30



01 02



GIRLS CLOUDSPUN CONCRETE SLEEVELESS POLO  
532423 | SP1750C / \$35



15 18 19



GIRLS HEATHER POLO  
579314 | SP1500C / \$30



06 08



GIRLS 1/4 ZIP  
578141 | SP2500C / \$50



08 10



GIRLS SHORT  
579315 | SP1750C / \$35

01 16 19



GIRLS SOLID KNIT SKIRT  
572340 | SP2250C / \$45

03



GIRLS PANT  
595586 | SP2750C / \$55

JUNIOR'S

# ▶ Boy's Apparel

01 02 03



50+  
UPF

LEFT SLEEVE

**MATTR**

**BOYS MATTR TOPO POLO** 532421 | SP2000C / \$40

92% Polyester, 8% Elastane-Circular Knit XS-XL

#	COLOR
01	High Rise / Bright White
02	Navy Blazer / High Rise
03	Bright White / Placid Blue

01 02



50+  
UPF

LEFT SLEEVE

**MATTR**

**BOYS SNACK SHACK POLO** 532420 | SP2000C / \$40

92% Polyester, 8% Elastane-Circular Knit XS-XL

#	COLOR
01	Bright White
02	Placid Blue

02 04 05



50+  
UPF

LEFT CHEST

**MATTR**

**BOYS MATTR KIWI STRIPE POLO** 530667 | SP2250C / \$45

92% Polyester, 8% Elastane-Circular Knit XS-XL

#	COLOR
01	Quiet Shade Heather / High Rise
04	Navy Blazer Heather / High Rise
05	Placid Blue Heather / Bright White

01 02 05 07



50+  
UPF

LEFT CHEST

**CLOUDSPUN™**

**BOYS CLOUDSPUN MONARCH POLO** 530669 | SP2000C / \$40

94% Polyester, 6% Elastane-Circular Knit XS-XL

#	COLOR
01	Puma Black Heather
02	High Rise Heather
05	Navy Blazer Heather
07	Placid Blue Heather / Navy Blazer

01 05 07 16



10  
UPF

LEFT CHEST

**BOYS ESSENTIAL POLO** 578133 | SP1500C / \$30

100% Polyester-Circular Knit XS-XL

#	COLOR
01	Bright White
05	Vibrant Orange
07	Puma Black
16	Navy Blazer



40  
UPF

LEFT CHEST

**BOYS FULL ZIP JACKET**

595452 | SP3000C / \$60

89% Polyester, 11% Elastane-Circular Knit

XS-XL

#	COLOR
03	Quarry
10	Placid Blue



40  
UPF

LEFT CHEST

CLOUDSPUN™

**BOYS CLOUDSPUN CREWNECK**

530670 | SP2750C / \$55

87% Polyester, 13% Elastane-Circular Knit

XS-XL

#	COLOR
01	Puma Black Heather
02	High Rise Heather
03	Navy Blazer Heather



50+  
UPF

LEFT CHEST

**BOYS 1/4 ZIP**

578139 | SP2500C / \$50

100% Polyester

XS-XL

#	COLOR
03	Puma Black
05	High Rise
06	Navy Blazer



LEFT SLEEVE

FIRST MILE

**BOYS FIRST MILE WIND JACKET**

530671 | SP3250C / \$65

100% Polyester-Recycled

XS-XL

#	COLOR
01	Puma Black
02	Navy Blazer



**BOYS STRETCH SHORT**

598675 | SP2250C / \$45

100% Polyester

XS-XL

#	COLOR
01	Puma Black
04	Vibrant Orange
05	Bright White
12	Navy Blazer
13	High Rise
16	Placid Blue



**BOYS 5 POCKET PANT**

530672 | SP3000C / \$60

100% Polyester

XS-XL

#	COLOR
01	Puma Black
02	Navy Blazer
03	High Rise
05	Bright White

# ▶ Girl's Apparel

01 02



**MATTR**

**GIRLS MATTR GREENERY POLO** 532422 | SP1750C / \$35

92% Polyester, 8% Elastane-Circular Knit XS-XL

#	COLOR
01	Navy Blazer
02	Bright White

01 05 06



**CLOUDSPUN™**

**GIRLS CLOUDSPUN FREE POLO** 530673 | SP2000C / \$40

94% Polyester, 6% Elastane-Circular Knit XS-XL

#	COLOR
01	Navy Blazer Heather
05	Corydalis Blue Heather
06	Parfait Pink Heather

03 12



**GIRLS ESSENTIAL POLO** 578136 | SP1500C / \$30

100% Polyester XS-XL

#	COLOR
03	Bright White
12	Navy Blazer

01 02



**CLOUDSPUN™**

**GIRLS CLOUDSPUN CONCRETE SLEEVELESS POLO** 532423 | SP1750C / \$35

94% Polyester, 6% Elastane-Circular Knit XS-XL

#	COLOR
01	Corydalis Blue
02	Parfait Pink

15 18 19



**GIRLS HEATHER POLO** 579314 | SP1500C / \$30

100% Polyester XS-XL

#	COLOR
15	Navy Blazer Heather
18	Corydalis Blue Heather
19	Parfait Pink Heather

06 08



**GIRLS 1/4 ZIP** 578141 | SP2500C / \$50

100% Polyester XS-XL

#	COLOR
06	Navy Blazer
08	Parfait Pink

08

10



01

16

19

50+  
UPF

03

**GIRLS SHORT**

579315 | SP1750C / \$35

100% Polyester

XS-XL

#	COLOR
08	Navy Blazer
10	Corydalis Blue

**GIRLS SOLID KNIT SKIRT**

572340 | SP2250C / \$45

92% Polyester, 8% Spandex

XS-XL

#	COLOR
01	Bright White
16	Navy Blazer
19	Parfait Pink

**GIRLS PANT**

595586 | SP2750C / \$55

90% Polyester, 10% Elastane

XS-XL

#	COLOR
03	Bright White

# Technology

## MATTR

MATTR fabric is focused on tech-forward features and materials to address climate and moisture. When the conditions are extreme, your clothing matters.

## CLOUDSPUN™

Feels like cotton. It's not. This fabric is specially knitted to be ultra soft, moisture-wicking, and four-way stretch.

## WRMLBL™ CLOUDSPUN

CLOUDSPUN WRMLBL is designed to offer the best in premium performance layering. We combined a heavier-weight version of our signature CLOUDSPUN fabric with Primaloft® quilted panels, which feature the best warmth-to-weight ratio in the industry. CLOUDSPUN WARMLBL is crazy soft, incredibly warm, and designed to perform.

## JACKPANT

Puma Golf's signature bottoms are crafted with quality materials, a dedication to performance, and painstaking attention to the smallest details. Custom-woven fabric from carefully selected yarns for the perfect blend of stretch, moisture-wicking, and elevated finishing.



101 Fabric is our stretchiest bottoms fabric yet. It's also lightweight, quick drying, and moisture-wicking.



## STRETCH WAISTBAND

PUMA GOLF stretch waistband featuring PWRSTRETCH uses high-stretch elastic mesh and silicone gripper to maximize comfort and keep you locked in.

## PWRSHAPE

Engineered for ultimate support, shape, retention and a smooth, slimming effect. Four-way stretch fabric for comfort and unrestricted range of motion. Soft, breathable fabric with a bonded waistband and flatlock seams for maximum comfort.

# Footwear



PUSH  
PLAY



PUSH  
PLAY



PUSH  
PLAY



PUSH  
PLAY



PUSH  
PLAY

# Technology

## UPPER

### FULL-GRAIN LEATHER

Ultra-premium, full-grain leather upper provides soft feel, increased quality and a sophisticated look.

### ENGINEERED MESH

Extremely comfortable, breathable and durable lightweight mesh to keep your feet cool.

### MICROFIBER

Microfiber leather for lightweight durability and comfort.

### FLAT KNIT MESH

Non-stretch WATERPROOF and breathable mesh for the ultimate spikeless performance shoe.

### PWRCAGE

Super strong and lightweight TPU saddle provides excellent support and stability throughout your swing.

### DISC

DISC provides ultimate performance and unrivaled comfort with a micro-adjusting dial system that quickly and easily secures your foot for a locked-in, consistent and custom fit.

### PWRFRAME

Ultra-thin TPU frame strategically placed in high stress areas on upper for lightweight support and increased stability.

### PRO-CLIP

External TPU heel counter provides excellent support and stability for a locked-in feel.

### FASTEN8 PWRSTRAP SYSTEM

Advanced nylon straps integrated with the lacing system wrap the foot to provide a secure, personalized fit.

### TOPLINE CHASIS

3D Molded TPU wraps around the heel and sits along the top line of the midsole providing torsional stability.

### CORD LACING SYSTEM

A lightweight and easy to lace solution, the cord eyestay allows you to tighten your shoes for the perfect fit.

### TPU TOE CAP

TPU film reinforcement to the toe adds durability and protects you from early morning dew.

### HYBRID BOOTIE CONSTRUCTION

Provides customized fit, enhanced comfort and lock-down support.

## INSOLE

### PRO-FIT INSOLE

Ultra-soft yet supportive PU insole provides excellent fit, performance and long-lasting comfort.

### SOFTFOAM

Dual-density insole provides two unique layers of cushioning for customized comfort, fit and long lasting durability.

### MOLDED COMFORT INSOLE

Soft and responsive EVA provides a molded fit for long-lasting comfort and support.

## MIDSOLE

### ADAPT STABLE CUSHIONING FOAM

Proprietary foam utilizes a mixture of the highest-grade EVA Cushioning with impact-resistant foam that provides excellent dimensional stability.

### IGNITE FOAM

Revolutionary and proprietary PU foam provides energy return, responsive comfort, and superior step-in comfort. It will blow your mind.

### FUSIONFOAM

Mix of super soft EVA foam and ultra-responsive rubber combine to provide unrivaled energy return and cushioning to keep you comfortable all day long.

### SOLESHIELD

Micro-thin TPU film that is vacuum formed around the midsole for added durability and makes cleaning off dirt and debris a breeze.

## OUTSOLE

### PROADAPT

Tour-proven full-length TPU outsole provides next level traction and support throughout your swing, while flex-groves in key areas improves natural movement and provides unrivaled comfort for walking all day.

### PWRADAPT

Proprietary new sole system provides revolutionary 3-dimensional traction and cushioning for ultimate performance and comfort. More Traction + More Comfort = PWRADAPT.

### GRIPZONE TRACTION

Strategically placed directional lugs in proper zones for increased traction and grip throughout swing for more power.

### ORGANICALLY-ALTERED TRACTION

Traction inspired by nature - strategically designed directional lugs in proper zones for increased traction throughout swing for more grip and power.

### HIDDEN TRACTION

Innovative outsole provides the stylish profile appearance of a fashion forward sneaker, yet offers excellent recessed spikeless traction.

### PRO-FORM TPU

Premium TPU outsole compound provides excellent performance, grip and abrasion resistance on all surfaces.

### CARBON RUBBER

High abrasion-resistant rubber that provides excellent grip and long lasting durability.

### TORNADO CLEAT

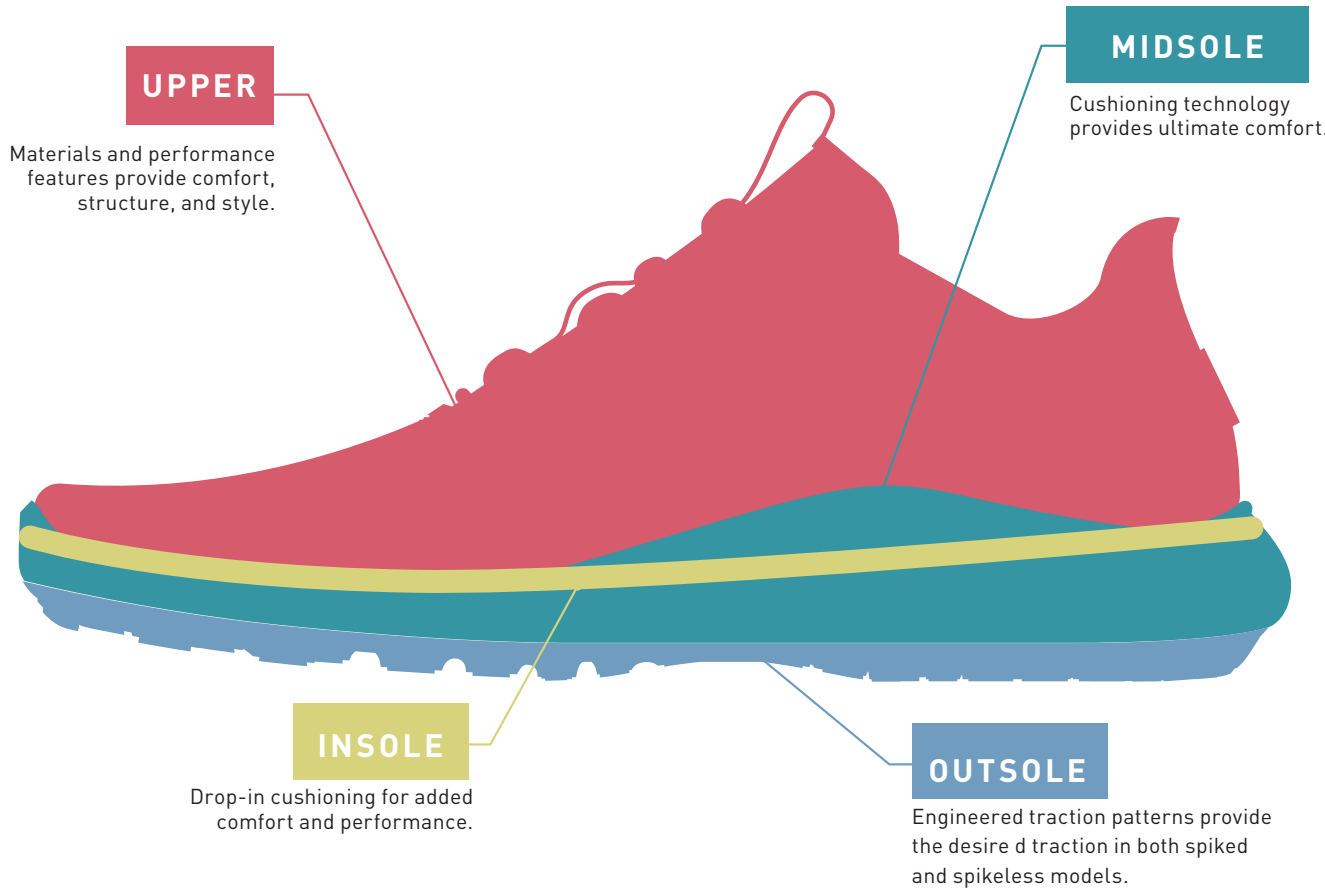
Dual-talon low-profile cleat made with K5 provides excellent traction and long lasting abrasion resistance. Utilizes the Fast Twist 3.0 System.

### CRYSTAL RUBBER

High abrasion-resistant rubber provides excellent grip and long lasting durability with an added crystal tint for style.



# Shoe Components



**1 YEAR WATER PROOF**



# Last Shapes



## PRO TOUR

Built to the specifications of the world's best golfers with a sleek anatomically-shaped toebox and midfoot. The sculpted heel shape provides you with lasting comfort and support.



## EPIC TOUR (MED + WIDE)

True performance with ample room and volume in the forefoot, supportive contouring and a round heel pocket for a secure fit. Less toe spring for a fit and feel meant for cleated golf performance.



## SPORT (MED + WIDE)

Sporty yet refined, with excellent fit and ample forefoot volume for unrivaled comfort and stylish toe-down look.



## GRIP COMFORT (MED + WIDE)

Inspired by a running last, rounder and more volume for an ergonomic feel that will fit any foot.

## ALL NEW GRIP COMFORT EXTRA WIDE



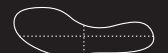
EXTRA WIDE  
MEDIUM

We built a new true wide last with significant volume added - notably in the ball, waist, and instep. This provides the extra room inside of the shoe allowing for accommodating fit and easy entry.



## WOMEN'S BLAZE

Performance tour last provides supportive contouring and a round heel pocket for a secure fit. Less toe spring for a fit and feel meant for cleated golf performance.



## WOMEN'S FASHION

Combines a feminine toe down appearance with contoured shaping for maximum comfort.

# ▶ Footwear Appendix

## MEN'S

CLEATED

PROADAPT Δ  
\$200



193849-01



193849-02



193849-03



193849-05

IGNITE PWRADAPT  
Caged Crafted  
\$170



193825-01



193825-02



193825-03



193825-04

IGNITE PWRADAPT  
Leather 2.0  
\$150



192989-01



192989-02

IGNITE PWRADAPT  
Caged  
\$150



192223-01



192223-02



192223-03



192223-04



192223-05



192223-09

IGNITE PWRADAPT  
Caged Disc  
\$150



192236-01



192236-02



192236-03



192236-04



192236-05



192236-09

SPIKELESS

RS-G  
\$130



193826-01



193826-02



193826-03



193826-07



193826-08

IGNITE FASTEN8  
Lace  
\$120



193000-01



193000-02



193000-03



193000-04



193000-05



193000-06



193000-11

IGNITE FASTEN8  
DISC  
\$120



194541-01



194541-02



194541-03



194541-04



194541-05



194541-06



194541-11

IGNITE FASTEN8  
Pro  
\$120



194466-01



194466-02



194466-03



194466-04



194466-05



194466-09

PUMA OG  
\$100



192529-01



192529-02



192529-03

GRIP FUSION  
PRO 3.0  
\$95



194467-02



194467-03



194467-04

FUSION EVO  
\$80



193850-01



193850-02



193850-03



193850-04



193850-06

FUSION EVO  
Extra Wide  
\$80



195123-01



195123-02



195123-03



195123-04



195123-05

## WOMEN'S

CLEATED

IGNITE BLAZE  
Pro  
\$120



192987-01



192987-03

SPIKELESS

RS-G  
Womens  
\$130



194258-01



194258-02



194258-04

IGNITE FASTEN8  
Wmns  
\$100



194241-01



194241-02



194241-03



194241-05

LAGUNA FUSION  
Slip-On  
\$80



194464-01



194464-02



194464-03



194464-05



194464-07

LAGUNA FUSION  
Sport  
\$80



192999-01



192999-02



192999-03



192999-04



192999-08



192999-09



192999-10

MONOLITE CAT EM  
\$70



192988-01



192988-02



192988-03



192988-05

TUSTIN L  
\$70



193827-01



193827-02



193827-03



193827-04

TUSTIN SUMMER  
\$70



194230-03



194230-04



194230-05

## JUNIOR'S

CLEATED

IGNITE PWRADAPT  
2.0 JR  
\$80



193480-01



193480-02

SPIKELESS

FUSION EVO  
JR  
\$65



195102-01



195102-02



195102-03

Sizes 1-3  
Sizes 4-7

195101-01

195101-02

195101-03

# FASTEN8

THE NEWEST EDITION OF THE IGNITE SPIKELESS FRANCHISE

## X

# SEE THRU THE HYPE



### FASTEN8 PWRSTRAP FIT SYSTEM

ADVANCED WEBBING AND LACING SYSTEM TO PROVIDE A SECURE FIT

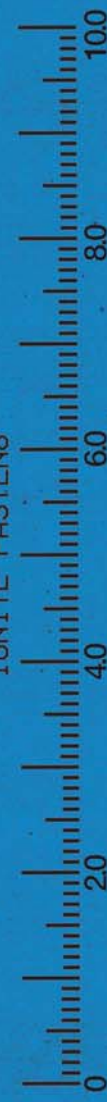


### IGNITE FOAM

MIDSOLE FOAM PROVIDES ENERGY RETURN, STABLE CUSHIONING, AND EXTREME COMFORT



IGNITE FASTEN8



IGNITE FASTEN8



# PROADAPT

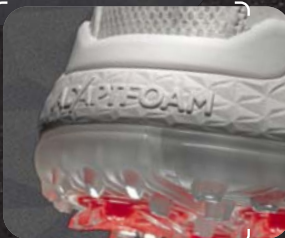
Stable Cushioning

Rickie Fowler's signature shoe with midsole innovation: ADAPTFOAM. This ground breaking foam has been developed based on the needs of professional golfers around the world. A game changer for sure.



## ▶ **ADAPTFOAM**

Puma Golf's all new foam provides stable cushioning, excellent dimensional stability and both high energy return and ground feel.



# FUSION *evo*

Inappropriately Comfortable

EXTENDED  
SIZING  
7-17

FUSION EVO is the ultimate evolution of the FUSION franchise making this shoe available in the widest size range ever offered PUMA Golf in both medium and EXTRA WIDE.

INAPPROPRIATELY  
**FUSION FOAM**  
COMFORTABLE



AVAILABLE IN  
MEDIUM + EXTRA WIDE



EXTRA WIDE  
MEDIUM

## ▶ **FUSION** Foam

Mix of super soft EVA foam and ultra-responsive rubber combine to provide unrivaled energy return and cushioning to keep you comfortable all day long.

## PROADAPT Δ

193849 | SP12000C / \$200

sizes 7 7.5 8 8.5 9 9.5 10 10.5 11 11.5 12 12.5 13 14



01  
Puma White / Puma White

- » **ADAPT Foam** - Puma Golf's all new foam provides stable cushioning, excellent dimensional stability and both high energy return and ground feel.
- » **ADAPT-WRAP Tongue** - A one-piece construction tongue that wraps around the instep of the foot from the medial side providing medial support.
- » **ADAPTIVE FIT SYSTEM** - Dual-layer, decoupled collar construction utilizes premium full-grain leather materials and a molded comfort collar that provides the comfort of a running shoe, but the look of a high-end leather shoe, to attack the course all day long.
- » **PROADAPT OUTSOLE** - Tour-proven full-length TPU outsole provides next level traction and support throughout your swing, while flex-groves in key areas improves natural movement and provides unrivaled comfort for walking all day.

- UP** FULL-GRAIN ATLANTIS LEATHER / ADAPTIVE FIT SYSTEM / MOLDED COMFORT COLLAR
- IN** ADAPT-WRAP TONGUE / PRO-FIT INSOLE
- MID** ADAPT FOAM / TOPLINE CHASSIS
- OUT** PROADAPT OUTSOLE / PWRADAPT / DUAL-DUROMETER TORNADO CLEAT



02  
Puma Black / Quiet Shade



03  
Puma White / Gray Violet



05  
Puma White / Navy Blazer

## IGNITE PWRADAPT LEATHER 2.0

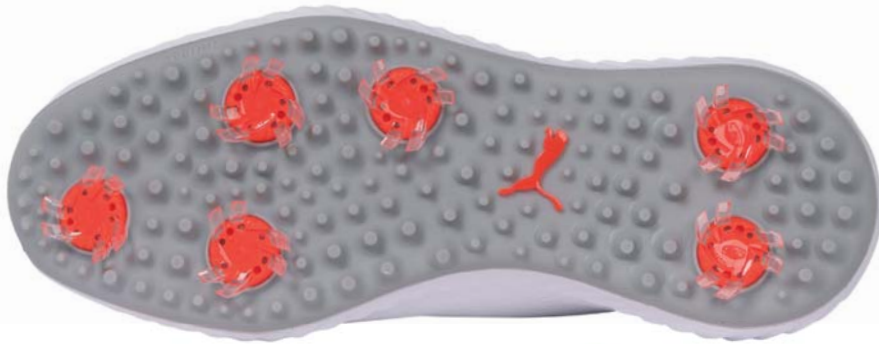
192989 | SP9000C / \$150

sizes 7 7.5 8 8.5 9 9.5 10 10.5 11 11.5 12 13 14

EPIC

1 YEAR WATER PROOF

90 DAY COMFORT GUARANTEE



01  
Puma White / Puma White

- » **FULL-GRAIN LEATHER** - Ultra-premium, full-grain leather upper provides soft feel, increased quality and a sophisticated look.
- » **PWRFRAME** - Ultra-thin TPU frame strategically placed in high stress areas on upper for lightweight support and increased stability.
- » **IGNITE Foam** - Revolutionary and proprietary midsole foam provides energy return, responsive comfort, stable cushioning, and superior step-in comfort.
- » **PWRADAPT** - Proprietary new sole system provides revolutionary 3-dimensional traction and cushioning for ultimate performance and comfort. More Traction + More Comfort = PWRADAPT.
- » **Epic Tour Last** - Refined, anatomical last shape provides excellent fit and ample forefoot volume for unrivaled comfort and stylish toe-down look.

**UP** FULL-GRAIN LEATHER / PWRADAPT / HYBRID BOOTIE CONSTRUCTION

**IN** PRO-FIT INSOLE

**MID** IGNITE FOAM

**OUT** GRIPZONE TRACTION / PRO-FORM TPU / TORNADO CLEAT



02  
Puma Black / Puma Black

FOOTWEAR

# IGNITE PWRADAPT CAGED CRAFTED

193825 | SP10200C / \$170

sizes 7 7.5 8 8.5 9 9.5 10 10.5 11 11.5 12 12.5 13 14 15

EPIC

1 YEAR WATER PROOF

90 DAY COMFORT GUARANTEE



01  
Puma White / Leather Brown /  
Puma Team Gold

- » **Comfort Construction** – Mesh bootie construction replaces traditional tongue for improved 360-degree fit, comfort and support.
- » **CRAFTED PWRCAGE** - Super strong and lightweight TPU saddle provides excellent support and stability throughout your swing.
- » **PWRFRAME** - Ultra-thin TPU frame strategically placed in high stress areas on upper for lightweight support and increased stability.
- » **IGNITE Foam** - Revolutionary and proprietary midsole foam provides energy return, responsive comfort, stable cushioning, and superior step-in comfort.
- » **PWRADAPT** – Proprietary new sole system provides revolutionary 3-dimensional traction and cushioning for ultimate performance and comfort. More Traction + More Comfort = PWRADAPT.
- » **Epic Tour Last** - Refined, anatomical last shape provides excellent fit and ample forefoot volume for unrivaled comfort and stylish toe-down look.

- UP** LEATHER / PWRFRAME / PWRCAGE / ADAPTIVE FIT SYSTEM
- IN** PRO-FIT INSOLE
- MID** IGNITE FOAM
- OUT** GRIPZONE TRACTION / PWRADAPT / PROFORM TPU



02  
Puma Black / Leather Brown /  
Puma Team Gold



03  
Peacoat / Leather Brown /  
Puma Team Gold



04  
Puma White / High Rise /  
Puma Team Gold



# IGNITE PWRADAPT CAGED

192223 / 192413 WIDE | SP9000C / \$150

sizes 7 7.5 8 8.5 9 9.5 10 10.5 11 11.5 12 12.5 13 14 15



01 / 01  
High Rise / Puma Silver /  
Puma White

- » **Comfort Construction** – Mesh bootie construction replaces traditional tongue for improved 360-degree fit, comfort and support.
- » **PWRCAGE** - Super strong and lightweight TPU saddle provides excellent support and stability throughout your swing.
- » **PWRFRAME** - Ultra-thin TPU frame strategically placed in high stress areas on upper for lightweight support and increased stability.
- » **IGNITE Foam** - Revolutionary and proprietary midsole foam provides energy return, responsive comfort, stable cushioning, and superior step-in comfort.
- » **PWRADAPT** – Proprietary new sole system provides revolutionary 3-dimensional traction and cushioning for ultimate performance and comfort. More Traction + More Comfort = PWRADAPT

- UP** PERFORMANCE FLAT-KNIT MESH / PWRFRAME / PWRCAGE / ADAPTIVE FIT SYSTEM
- IN** PRO-FIT INSOLE
- MID** IGNITE FOAM
- OUT** GRIPZONE TRACTION / PWRADAPT / PRO-FORM TPU / TORNADO CLEAT



02 / 02  
Puma Black / Puma Silver /  
Puma Black



03 / 03  
Quiet Shade / Puma Silver /  
Puma Black



04 / 04  
Peacoat / Puma Silver /  
Quiet Shade



05  
Puma White / Puma Silver /  
Peacoat



09  
Quiet Shade / Puma Silver /  
Zinfandel

# IGNITE PWRADAPT CAGED DISC

192236 | SP9000C / \$150

sizes 7 7.5 8 8.5 9 9.5 10 10.5 11 11.5 12 12.5 13 14 15



01  
High Rise / Puma Silver /  
Puma White

- » **DISC Closure System** – DISC provides ultimate performance and unrivaled comfort with a micro-adjusting dial system that quickly and easily secures your foot for a locked in, consistent and custom fit.
- » **Comfort Construction** – Mesh bootie construction replaces traditional tongue for improved 360-degree fit, comfort and support.
- » **PWRCAGE** – Super strong and lightweight TPU saddle provides excellent support and stability throughout your swing.
- » **PWRFRAME** – Ultra-thin TPU frame strategically placed in high stress areas on upper for lightweight support and increased stability.
- » **IGNITE Foam** – Revolutionary and proprietary midsole foam provides energy return, responsive comfort, stable cushioning, and superior step-in comfort.

- UP** PERFORMANCE FLAT-KNIT MESH / PWRFRAME / PWRCAGE / ADAPTIVE FIT SYSTEM / DISC
- IN** PRO-FIT INSOLE
- MID** IGNITE FOAM
- OUT** GRIPZONE TRACTION / PWRADAPT / PRO-FORM TPU / TORNADO CLEAT



02  
Puma Black / Puma Silver /  
Puma Black



03  
Quiet Shade / Bronze /  
Puma Black



04  
Peacoat / Puma Silver /  
Quiet Shade



05  
Puma White / Puma Silver /  
Peacoat



09  
Quiet Shade / Puma Silver /  
Zinfandel

# FASTEN8

## IGNITE FASTEN8

193000 / 194864 WIDE | SP7200C / \$120

sizes 7 7.5 8 8.5 9 9.5 10 10.5 11 11.5 12 13 14



06 / 03  
High Rise / Puma Silver / Quiet Shade

- » **Fasten8 PWRStrap Fit System** - Advanced nylon webbing straps integrated with the lacing system that wrap the foot to provide a secure, personalized fit.
- » **IGNITE Foam** - Revolutionary and proprietary midsole foam provides energy return, responsive comfort, stable cushioning, and superior step-in comfort.
- » **PWRCAGE** - Super strong and lightweight TPU saddle integrated with midfoot support webbing straps provides excellent support and stability throughout your swing.
- » **Performance Mesh + TPU** - Non-stretch WATERPROOF and breathable mesh, premium TPU PWRCAGE and PWRFrame combine for the ultimate spikeless performance shoe.
- » **PWRFRAME** - Ultra-thin TPU frame strategically placed in high stress areas on upper for lightweight support and increased stability.
- » **Organically-Altered Traction** - Traction inspired by nature - strategically designed directional lugs in proper zones for increased traction throughout swing for more grip and power.

- UP** PERFORMANCE MESH / PWRCAGE / PWRFRAME
- IN** MOLDED COMFORT INSOLE
- MID** IGNITE FOAM / SOLESHIELD
- OUT** PRO-FORM TPU / CARBON CRYSTAL RUBBER



FOOTWEAR

# IGNITE FASTEN8 DISC

194541 | SP7200C / \$120

sizes 7 7.5 8 8.5 9 9.5 10 10.5 11 11.5 12 13 14

SPORT

1 YEAR WATER PROOF

90 DAY MOLDED COMFORT GUARANTEE



06 High Rise / Puma Silver / Quiet Shade

- » **Fasten8 PWRStrap Fit System** - Advanced nylon webbing straps integrated with the lacing system that wrap the foot to provide a secure, personalized fit.
- » **DISC Closure System** - DISC provides ultimate performance and unrivaled comfort with a micro-adjusting dial system that quickly and easily secures your foot for a locked in, consistent and custom fit.
- » **IGNITE Foam** - Revolutionary and proprietary midsole foam provides energy return, responsive comfort, stable cushioning, and superior step-in comfort.
- » **PWRCAGE** - Super strong and lightweight TPU saddle integrated with midfoot support webbing straps provides excellent support and stability throughout your swing.
- » **Performance Mesh + TPU** - Non-stretch WATERPROOF and breathable mesh, premium TPU PWRCAGE and PWRFrame combine for the ultimate spikeless performance shoe.
- » **PWRFRAME** - Ultra-thin TPU frame strategically placed in high stress areas on upper for lightweight support and increased stability.

- UP** DISC / PERFORMANCE MESH / PWRCAGE / PWRFRAME
- IN** MOLDED COMFORT INSOLE
- MID** IGNITE FOAM / SOLESHIELD
- OUT** PRO-FORM TPU / ORGANICALLY-ALTERED TRACTION



02 Puma Black / Puma Silver / Puma White



03 Puma White / Puma Silver / High Rise



04 Navy Blazer / Puma Silver / Quiet Shade



05 Quarry / Puma Silver / Navy Blazer



01 Quiet Shade / Gold / Puma Black



11 Quiet Shade / Quiet Shade

# IGNITE FASTEN8 PRO

194466 | SP7200C / \$120

sizes 7 7.5 8 8.5 9 9.5 10 10.5 11 11.5 12 13 14

SPORT

1 YEAR WATER PROOF

90 DAY MILEAGE GUARANTEE



01  
Quiet Shade / Gold / Puma Black

- » **Fasten8 PWRStrap Fit System** - Advanced nylon webbing straps integrated with the lacing system that wrap the foot to provide a secure, personalized fit.
- » **IGNITE Foam** - Revolutionary and proprietary midsole foam provides energy return, responsive comfort, stable cushioning, and superior step-in comfort.
- » **PWRFRAME** - Ultra-thin TPU frame strategically placed in high stress areas on upper for lightweight support and increased stability.
- » **Organically - Altered Traction** - Traction inspired by nature - strategically designed directional lugs in proper zones for increased traction throughout swing for more grip and power.
- » **SoleShield** - Micro-thin TPU film that is vacuum formed around the midsole for added durability and makes cleaning off dirt and debris a breeze.

- UP** MICROFIBER / PWRFRAME / PWRFRAME
- IN** MOLDED COMFORT INSOLE
- MID** IGNITE FOAM / SOLESHIELD
- OUT** PRO-FORM TPU / ORGANICALLY-ALTERED TRACTION



02  
Puma Black / Puma Silver / Puma Black



03  
Puma White / Puma Silver / High Rise



04  
Navy Blazer / Puma Silver / Quiet Shade



05  
High Rise / Puma Silver / Quiet Shade



09  
Quiet Shade / Quiet Shade

FOOTWEAR

# ▶ FUSION

## GRIP FUSION PRO 3.0

194467 | SP5700C / \$95

sizes 7 7.5 8 8.5 9 9.5 10 10.5 11 11.5 12 12.5 13 14 15 16 17



04  
Navy Blazer / Puma Silver /  
Quiet Shade

- » **FUSIONFOAM** - Mix of super soft EVA foam and ultra-responsive rubber combine to provide unrivaled energy return and cushioning to keep you comfortable all day long.
- » **SOFTFOAM** - Dual-density insole provides two unique layers of cushioning for customized comfort, fit and long-lasting durability.
- » **FUSION TRACTION** - Hex traction lugs combined strategically placed in key areas to provide the traction that will grip the ground in the deepest of rough and on the patio in front of your grill.
- » **GRIP COMFORT LAST** - Ample volume and generous fit for an ultra-comfortable footwear experience.

- UP** MICROFIBER
- IN** SOFTFOAM
- MID** FUSIONFOAM
- OUT** FUSION TRACTION / GRIP COMFORT LAST



03  
Puma White / Puma Silver /  
Quiet Shade



02  
Quiet Shade / Puma Silver /  
Ibiza Blue

# FUSION EVO

193850 | SP4800C / \$80

sizes 7 7.5 8 8.5 9 9.5 10 10.5 11 11.5 12 12.5 13 14 15 16 17



06  
Quiet Shade / Quiet Shade

- » **BOOTIE CONSTRUCTION** - Bootie construction provides step in comfort and 360-degrees of support around the foot.
- » **PWRStrap Fit System** - Advanced nylon webbing straps integrated with the lacing system that wrap the foot to provide a secure, personalized fit.
- » **SOFTFOAM** - Dual-density insole provides two unique layers of cushioning for customized comfort, fit and long-lasting durability.
- » **FUSIONFOAM** - Mix of super soft EVA foam and ultra-responsive rubber combine to provide unrivaled energy return and cushioning to keep you comfortable all-day long.

- UP** ENGINEERED MESH / BOOTIE CONSTRUCTION / TPU CLIP / WEBBING FIT STRAP
- IN** SOFTFOAM
- MID** FUSIONFOAM
- OUT** FUSION TRACTION / CARBON CRYSTAL RUBBER



01  
Puma Black / Quiet Shade



02  
Puma White / Quarry



03  
Navy Blazer / Quiet Shade



04  
High Rise / Limepunch

FOOTWEAR

# FUSION EVO EXTRA WIDE

195123 WIDE | SP4800C / \$80

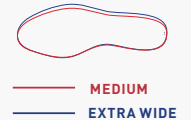
sizes 7 7.5 8 8.5 9 9.5 10 10.5 11 11.5 12 12.5 13 14 15 16 17



05  
Quiet Shade / Quiet Shade

## Extra Wide Last

We built a new true wide last with significant volume added - notably in the ball, waist, and instep. This provides the extra room inside of the shoe allowing for accommodating fit and easy entry.



- » **BOOTIE CONSTRUCTION** - Bootie construction provides step in comfort and 360-degrees of support around the foot.
- » **PWRStrap Fit System** - Advanced nylon webbing straps integrated with the lacing system that wrap the foot to provide a secure, personalized fit.
- » **SOFTFOAM** - Dual-density insole provides two unique layers of cushioning for customized comfort, fit and long-lasting durability.
- » **FUSIONFOAM** - Mix of super soft EVA foam and ultra-responsive rubber combine to provide unrivaled energy return and cushioning to keep you comfortable all-day long.

- UP** ENGINEERED MESH / BOOTIE CONSTRUCTION / TPU HEEL CLIP / WEBBING FIT STRAP
- IN** SOFTFOAM
- MID** FUSIONFOAM
- OUT** FUSION TRACTION / CARBON CRYSTAL RUBBER



01  
Puma Black / Quiet Shade



02  
Puma White / Quarry



03  
Navy Blazer / Quiet Shade



04  
High Rise / Limepunch



RS-G

193826 | SP7800C / \$130

sizes 7 7.5 8 8.5 9 9.5 10 10.5 11 11.5 12 13 14



08  
Puma White / Puma Black /  
Red Blast

- » **SEAM SEALED UPPER** – Welded on TPU layers completely seam seal the upper to provide the ultimate protection from the elements while on the course.
- » **FUSIONFOAM** – Mix of super soft EVA foam and ultra-responsive rubber combine to provide unrivaled energy return and cushioning to keep you comfortable all day long.
- » **SOFTFOAM SOCKLINER** – Dual-density insole provides two unique layers of cushioning for customized comfort, fit and long-lasting durability.

- UP** SEAM SEALED UPPER / REFLECTIVE TONGUE TAB / TPU SKIN
- IN** SOFTFOAM SOCKLINER
- MID** FUSIONFAME MIDSOLE
- OUT** GIPZONE TRACTION / CARBON RUBBER OUTSOLE



02  
Puma White / Quiet Shade /  
Quarry



01  
Puma Black / Quiet Shade /  
Dark Shadow



07  
Quarry / Castlerock



03  
Vaporous Gray / Thyme /  
Pureed Pumpkin

PUMA 0G

192529 | SP6000C / \$100

sizes 7 7.5 8 8.5 9 9.5 10 10.5 11 11.5 12 13 14



01  
Peacoat / Peacoat

- » **FULL-GRAIN ATLANTIS LEATHER** - Ultra-premium, full-grain leather upper provides a soft feel, increased quality, and a sophisticated look.
- » **HIDDEN TRACTION OUTSOLE** - Innovative outsole provides the stylish profile appearance of a fashion-forward sneaker yet offers excellent recessed spikeless traction.

- UP** FULL-GRAIN ATLANTIS LEATHER
- IN** PRO-FIT INSOLE
- OUT** HIDDEN TRACTION OUTSOLE



02  
Puma White / Puma White



03  
Puma Black / Puma Black

# ▶ SPECIAL EDITION

## FUSION EVO STARS AND STRIPES

195586 | SP6000C / \$100

7 7.5 8 8.5 9 9.5 10 10.5 11 11.5 12 12.5 13 14 15 16 17



01  
Puma White / Navy Blazer /  
High Risk Red

- » **BOOTIE CONSTRUCTION** – Bootie construction provides step in comfort and 360-degrees of support around the foot.
- » **PWRStrap Fit System** - Advanced nylon webbing straps integrated with the lacing system that wrap the foot to provide a secure, personalized fit.
- » **SOFTFOAM** - Dual-density insole provides two unique layers of cushioning for customized comfort, fit and long-lasting durability.
- » **FUSIONFOAM** - Mix of super soft EVA foam and ultra-responsive rubber combine to provide unrivaled energy return and cushioning to keep you comfortable all-day long.

- UP** ENGINEERED MESH / BOOTIE CONSTRUCTION / TPU CLIP / WEBBING FIT STRAP
- IN** SOFTFOAM
- MID** FUSIONFOAM
- OUT** FUSION TRACTION / CARBON CRYSTAL RUBBER

## IGNITE PWRADAPT CAGED TEAM USA

376115 | SP10200C / \$170

sizes 7 7.5 8 8.5 9 9.5 10 10.5 11 11.5 12 12.5 13 14 15



01  
Navy Blazer / Puma White /  
High Risk Red / Navy Blazer

- » **Comfort Construction** – Mesh bootie construction replaces traditional tongue for improved 360-degree fit, comfort and support.
- » **PWRCAGE** - Super strong and lightweight TPU saddle provides excellent support and stability throughout your swing.
- » **PWRFRAME** - Ultra-thin TPU frame strategically placed in high stress areas on upper for lightweight support and increased stability.
- » **IGNITE Foam** - Revolutionary and proprietary midsole foam provides energy return, responsive comfort, stable cushioning, and superior step-in comfort.
- » **PWRADAPT** – Proprietary new sole system provides revolutionary 3-dimensional traction and cushioning for ultimate performance and comfort. More Traction + More Comfort = PWRADAPT

- UP** FULL-GRAIN LEATHER / PWRADAPT / HYBRID BOOTIE CONSTRUCTION
- IN** PRO-FIT INSOLE
- MID** IGNITE FOAM
- OUT** GRIPZONE TRACTION / PRO-FORM TPU / TORNADO CLEAT

# ▶ SPECIAL EDITION

## IGNITE FASTEN8 VOLITION STARS & STRIPES

195581 | SP8400C / \$140

sizes 7 7.5 8 8.5 9 9.5 10 10.5 11 11.5 12 13 14

SPORT

WATER  
PROOF



01  
Puma White / Navy Blazer /  
High Risk Red

- » **Fasten8 PWRStrap Fit System** - Advanced nylon webbing straps integrated with the lacing system that wrap the foot to provide a secure, personalized fit.
- » **IGNITE Foam** - Revolutionary and proprietary midsole foam provides energy return, responsive comfort, stable cushioning, and superior step-in comfort.
- » **PWRCAGE** - Super strong and lightweight TPU saddle integrated with midfoot support webbing straps provides excellent support and stability throughout your swing.
- » **Performance Mesh + TPU** - Non-stretch WATERPROOF and breathable mesh, premium TPU PWRCAGE and PWRFrame combine for the ultimate spikeless performance shoe.
- » **PWRFRAME** - Ultra-thin TPU frame strategically placed in high stress areas on upper for lightweight support and increased stability.
- » **Organically-Altered Traction** - Traction inspired by nature - strategically designed directional lugs in proper zones for increased traction throughout swing for more grip and power.

UP PERFORMANCE MESH / PWRCAGE / PWRFRAME  
IN MOLDED COMFORT INSOLE  
MID IGNITE FOAM / SOLESHIELD  
OUT PRO-FORM TPU / CARBON CRYSTAL RUBBER

# Women's Footwear



PUSH  
PLAY



PUSH  
PLAY



PUSH  
PLAY



PUSH  
PLAY



PUSH  
PLAY

# FASTEN8 WOMENS

THE NEWEST EDITION OF THE IGNITE SPIKELESS FRANCHISE

## X

## SEE THRU THE HYPE

### FASTEN8 PWRSTRAP FIT SYSTEM

ADVANCED WEBBING AND LACING SYSTEM TO PROVIDE A SECURE FIT



### IGNITE FOAM

MIDSOLE FOAM PROVIDES ENERGY RETURN, STABLE CUSHIONING, AND EXTREME COMFORT



IGNITE FASTEN8



IGNITE FASTEN8



# Laguna Fusion Slip-On

The FUSION of style and performance. The sleek Engineered Mesh Bootie Construction offers a simple, sophisticated, and fashionable look.



## ► Performance Mesh + TPU

Non-stretch WATERPROOF and breathable mesh, premium materials and PWRFrame combine for the ultimate spikeless performance shoe.

INAPPROPRIATELY  
FUSION FOAM  
COMFORTABLE



## IGNITE BLAZE PRO

192987 | SP7200C / \$120

sizes 5.5 6 6.5 7 7.5 8 8.5 9 9.5 10 10.5 11 12

BLAZE

1 YEAR WATER PROOF

90 DAY COMFORT GUARANTEE



01  
Puma White / High Rise

- » **Hybrid Bootie Construction** – New bootie construction replaces traditional tongue for improved 360 degree fit, comfort and support.
- » **FULL-GRAIN ATLANTIS LEATHER** - Ultra-premium, full-grain leather upper provides a soft feel, increased quality, and a sophisticated look.
- » **IGNITE Foam** - Revolutionary and proprietary midsole foam provides energy return, responsive comfort, stable cushioning, and superior step-in comfort.

- UP** FULL-GRAIN ATLANTIS LEATHER
- IN** PRO-FIT INSOLE
- MID** IGNITE FOAM
- OUT** PRO-FORM TPU / GRIPZONE TRACTION / TORNADO



03  
Puma Black / Rosewater



# IGNITE FASTEN8 WMNS

194241 | SP6000C / \$100

sizes 5.5 6 6.5 7 7.5 8 8.5 9 9.5 10 10.5 11 12

SPORT

1 YEAR WATER PROOF

90 DAY COMFORT GUARANTEE



03  
High Rise / Puma Silver /  
Scuba Blue

- » **Fasten8 PWRStrap Fit System** - Advanced nylon webbing straps integrated with the lacing system that wrap the foot to provide a secure, personalized fit.
- » **IGNITE Foam** - Revolutionary and proprietary midsole foam provides energy return, responsive comfort, stable cushioning, and superior step-in comfort.
- » **PWRCAGE** - Super strong and lightweight TPU saddle integrated with midfoot support webbing straps provides excellent support and stability throughout your swing.
- » **Performance Mesh + TPU** - Non-stretch WATERPROOF and breathable mesh, premium TPU PWRCAGE and PWRFrame combine for the ultimate spikeless performance shoe.
- » **PWRFRAME** - Ultra-thin TPU frame strategically placed in high stress areas on upper for lightweight support and increased stability.
- » **Organically-Altered Traction** - Traction inspired by nature - strategically designed directional lugs in proper zones for increased traction throughout swing for more grip and power.

- UP** PERFORMANCE MESH / PWRCAGE / PWRFRAME
- IN** MOLDED COMFORT INSOLE
- MID** IGNITE FOAM
- OUT** PRO-FORM TPU / ORGANICALLY ALTERED TRACTION



01  
Puma White / Puma Silver /  
Pink Lady



02  
Navy Blazer / Puma Silver /  
High Rise



05  
Puma Black / Puma White

FOOTWEAR

# ▶ FUSION

## LAGUNA FUSION SLIP ON

194464 | SP4800C / \$80

sizes 5.5 6 6.5 7 7.5 8 8.5 9 9.5 10 10.5 11 12



01  
Puma Black / Puma Silver

- » **Performance Mesh + TPU** - Non-stretch and breathable mesh, premium materials and PWRFrame combine for the ultimate spikeless performance shoe.
- » **FUSIONFOAM** - Mix of super soft EVA foam and ultra-responsive rubber combine to provide unrivaled energy return and cushioning to keep you comfortable all day long.
- » **GripZone Traction** - Strategically placed hexagons provide multi-directional traction while 24 chevron-shaped lugs increase traction where it's needed most.

- UP** PERFORMANCE MESH / BOOTIE CONSTRUCTION / PRO-CLIP
- IN** FUSIONFOAM
- OUT** CARBON CRYSTAL RUBBER / GRIPZONE TRACTION



02  
High Rise / Puma Silver



03  
Blue Spruce / Puma Silver



05  
Ignite Pink / Puma Silver



07  
Parfait Pink / Parfait Pink

# LAGUNA FUSION SPORT

192999 | SP4800C / \$80

sizes 5.5 6 6.5 7 7.5 8 8.5 9 9.5 10 10.5 11 12

SPORT



01  
Puma White / Puma White

- » **Performance Mesh + TPU** - Non-stretch mesh, premium materials and PWRFrame combine for the ultimate spikeless performance shoe.
- » **FUSIONFOAM** - Mix of super soft EVA foam and ultra-responsive rubber combine to provide unrivaled energy return and cushioning to keep you comfortable all day long.

- UP** PERFORMANCE MESH / PRO-CLIP
- IN** SOFTFOAM / SOCKLINER
- MID** FUSIONFOAM
- OUT** CARBON CRYSTAL RUBBER / GRIPZONE TRACTION



02  
Puma Black / Puma White



03  
High Rise / Puma White



04  
Rosewater / Puma White



08  
Peacoat / Puma Silver



09  
Light Lavender / Puma Silver /  
Puma White



10  
Corydalis Blue

FOOTWEAR

RS-G WOMENS

194258 | SP7800C / \$130

sizes 5.5 6 6.5 7 7.5 8 8.5 9 9.5 10 10.5 11 12

1 YEAR WATER PROOF



- » **SEAM SEALED UPPER** – Welded on TPU layers completely seam seal the upper to provide the ultimate protection from the elements while on the course.
- » **FUSIONFOAM** – Mix of super soft EVA foam and ultra-responsive rubber combine to provide unrivaled energy return and cushioning to keep you comfortable all day long.
- » **SOFTFOAM SOCKLINER** – Dual-density insole provides two unique layers of cushioning for customized comfort, fit and long-lasting durability.

- UP** SEAM-SEALED UPPER / REFLECTIVE TONGUE TAB / TPU SKIN
- IN** SOFTFOAM SOCKLINER
- MID** FUSIONFOAM
- OUT** GRIPZONE TRACTION / CARBON CRYSTAL RUBBER



04  
Vaporous Gray / Peachskin /  
High Rise



01  
Puma Black / Quiet Shade /  
Dark Shadow



02  
Puma White / Quiet Shade /  
Quarry

MONOLITE CAT EM

192988 | SP4200C / \$70

sizes 5.5 6 6.5 7 7.5 8 8.5 9 9.5 10 10.5 11 12



03  
Rosewater / Rapture Rose

- » **Performance Mesh** - Engineered open celled mesh provides breathable comfort and support on the hottest of summer days
- » **Carbon Rubber** - High abrasion-resistant rubber that provides excellent grip and long lasting durability.

UP PERFORMANCE MESH

OUT CARBON RUBBER



01  
Gray Violet / Puma White



02  
Puma Black / Rapture Rose

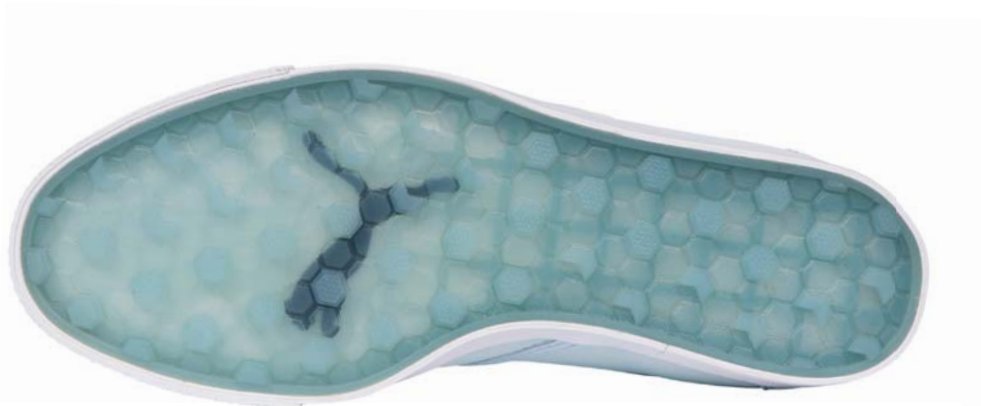


05  
Peacoat / Mist Green

# TUSTIN L

193827 | SP4200C / \$70

sizes 5.5 6 6.5 7 7.5 8 8.5 9 9.5 10 10.5 11 12



01  
Omphalodes / Puma Team Gold

- » **Microfiber** - Microfiber leather for lightweight durability and comfort.
- » **Molded Comfort Insole** - Soft and responsive EVA provides a molded fit for long-lasting comfort and support.
- » **Hidden Traction** - Innovative outsole provides the stylish profile appearance of a fashion forward sneaker, yet offers excellent recessed spikeless traction.

UP MICROFIBER

IN MOLDED COMFORT INSOLE

OUT HIDDEN TRACTION



02  
Puma White / Puma Team Gold



03  
Puma Black / Puma Team Gold



04  
Peachskin / Puma Team Gold

# TUSTIN SUMMER

194230 | SP4200C / \$70

sizes 5.5 6 6.5 7 7.5 8 8.5 9 9.5 10 10.5 11 12



03  
Navy Blazer / Puma Team Gold

- » **Textile Upper** - Canvas upper provides a fresh, lightweight look that is a perfect option to wear on the course or in the clubhouse.
- » **Molded Comfort Insole** - Soft and responsive EVA provides a molded fit for long-lasting comfort and support.
- » **Hidden Traction** - Innovative outsole provides the stylish profile appearance of a fashion forward sneaker, yet offers excellent recessed spikeless traction.

- UP TEXTILE UPPER
- IN MOLDED COMFORT INSOLE
- OUT HIDDEN TRACTION



04  
Cloud Pink / Puma Team Gold



05  
Puma Black / Puma Team Gold

FOOTWEAR

# ▶ Junior's Footwear

## IGNITE PWRADAPT 2.0 JRS

193480 | SP4800C / \$80

sizes 1 2 3 4 5 6 7



01  
Puma White / Puma White



02  
Puma Black / Puma Black



- » **Microfiber** - Microfiber leather for lightweight durability and comfort.
- » **IGNITE Foam** - Revolutionary and proprietary midsole foam provides energy return, responsive comfort, stable cushioning, and superior step-in comfort.
- » **Gripzone Traction** - Strategically placed hexagons provide multi-directional traction while 24 chevron-shaped lugs increase traction where it's needed most.
- » **Pro-Form TPU** - Premium TPU outsole compound provides excellent performance, grip and abrasion resistance on all surfaces.

UP MICROFIBER

MID IGNITE FOAM

OUT GRIPZONE TRACTION / PRO-FORM TPU

## GRIP FUSION EVO JRS

195101 / 195102 | SP3900C / \$65

195102 sizes 1 2 3

195101 sizes 4 5 6 7



01  
Puma Black / Puma Black



02  
High Rise / Limepunch



03  
High Rise / Pink Lady



- » **Fusion Foam** - Mix of super soft EVA foam and ultra-responsive rubber combine to provide unrivaled energy return and cushioning to keep you comfortable all day long.
- » **Organically Altered Traction** - Traction inspired by nature- strategically designed directional lugs in proper zones for increased traction throughout swing for more grip and power.
- » **Carbon Rubber** - High abrasion-resistant rubber that provides excellent grip and long lasting durability.

UP ENGENIERED MESH

MID FUSIONFOAM

OUT ORGANICALLY-ALTERED TRACTION / CARBON RUBBER



## ▶ Cleats

These cleats incorporate the innovative insert system - Tour Lock. Tour Lock golf cleats are also compatible with Softspikes Fast Twist as well as Champ - SLIM-Lok and Tri-LOK systems.



01  
Red Blast

### PUMA PWRADAPT GOLF CLEATS

898845 | SP800C / \$16



01  
Bright Plasma

### PUMA BLAZE GOLF CLEATS

898846 | SP800C / \$16

PUSH  
PLAY



PUSH  
PLAY



PUSH  
PLAY



PUSH  
PLAY



PUSH  
PLAY





# Accessories

## Men's & Women's Caps



### ▶ P Cap

The P Cap is a staple in any golfer's wardrobe and comes in a variety of silhouettes. Now available in a women's fit.



### ▶ Moving Day Cap

The Moving Day snapbacks feature ultra-technical materials, retro-Puma Formstrip branding, and the perfect fit. Everyday can be Moving Day when you are this comfortable.



# Men's & Women's Beanies

- ▶ These classic knitted pom and lifestyle beanies bring style to the course and will keep you warm when the temperatures drop. Featuring stylish trim details and sophisticated branding, these beanies are suitable for on and off the course.



# ▶ Men's Caps



01  
Puma Black / Bright White /  
Vibrant Orange

02  
Bright White /  
Puma Black /  
Vibrant Orange

**MOVING DAY X SNAPBACK CAP** 023409 | SP1750C / \$35

95% Polyester, 5% Elastane

SIZE OS



01  
Bright White / Thyme

**MOWER P 110 SNAPBACK CAP** 023567 | SP1750C / \$35

95% Polyester, 5% Elastane

SIZE OS



01  
Bright White /  
Placid Blue

02  
Placid Blue /  
Bright White

**SNACK SHACK P 110 TRUCKER  
SNAPBACK CAP** 023412 | SP1750C / \$35

92% Polyester, 8% Elastane

SIZE OS



01  
Puma Black /  
Bright White

02  
Bright White /  
Puma Black

03  
Navy Blazer /  
Bright White

**MOVING DAY 110  
SNAPBACK CAP** 023408 | SP1750C / \$35

95% Polyester, 5% Elastane

SIZE OS



01  
Puma Black / Acid Lime

02  
Federal Blue /Corydalis  
Blue

**MINI GOLF P 110 SNAPBACK CAP** 023543 | SP1750C / \$35

95% Polyester, 5% Elastane

SIZE OS



01  
Thyme / Puma Black

02  
Puma Black /  
Puma Black

**CAMO PATTERN P 110  
SNAPBACK CAP** 023065 | SP1750C / \$35

97% Polyester, 3% Elastane

SIZE OS



02  
Bright White

01  
Puma Black

**PARS & STRIPES P 110  
SNAPBACK CAP**

023300 | SP1750C / \$35

95% Polyester, 5% Elastane

SIZE OS



01  
Puma Black / Puma Black



02  
Bright White /  
Bright White



08  
Quiet Shade /  
Georgia Peach

**TRUCKER P 110 SNAPBACK CAP** 022538 | SP1500C / \$30

60% Cotton, 40% Polyester

SIZE OS



01  
Puma Black / Puma Black



02  
Bright White / Puma  
Black



07  
Bright White /  
Vibrant Orange

**BREEZER P 110 SNAPBACK CAP** 023060 | SP1750C / \$35

100% Polyester

SIZE OS



01  
Puma Black /  
Bright White



04  
Bright White /  
Puma Black



07  
Blue Bell /  
High Rise



09  
Vibrant Orange /  
Quarry



11  
Quiet Shade /  
Bright White



17  
Navy Blazer /  
Quarry



21  
High Rise /  
Peacoat



24  
Persian Red/  
Puma Black

**P 110 SNAPBACK CAP**

022537 | SP1500C / \$30

95% Polyester, 5% Elastane

SIZE OS



01  
Puma Black



02  
Peacoat



03  
Quarry



06  
Bright White



07  
Vibrant Orange

**POUNCE ADJUSTABLE CAP**

021431 | SP1000C / \$20

100% Polyester

SIZE OS



01  
Bright White



02  
Puma Black



03  
High Risk Red



04  
Peacoat



05  
Quarry

**TOUR DRIVER CAP**

022547 | SP2000C / \$40

92% Polyester, 8% Elastane

S/M, L/XL



01  
Puma Black



02  
Quarry



04  
Deep Lichen Green



08  
Zinfandel

**DRIVER CAP**

022028 | SP1400C / \$28

69% Polyester, 16% Viscose, 10% Cotton, 5% Elastane

S/M, L/XL



01  
Puma Black



02  
Bright White



03  
Peacoat

**CRESTING 110 CAP**

022582 | SP1000C / \$20

95% Polyester, 5% Elastane

SIZE OS





01  
Puma Black



02  
Bright White



05  
High Risk Red



04  
Peacoat



01  
Bright White / Navy Blazer /  
High Risk Red

**CRESTRING ADJUSTABLE CAP**

022693 | SP800C / \$16

SIZE OS

100% Polyester

**VOLITION STARS SNAPBACK CAP**

023737 | SP1600C / \$32

SIZE OS

95% Polyester, 5% Elastane



01  
Navy Blazer / High Risk Red



01  
Bright White

02  
Navy Blazer

**VOLITION TACTICAL PATCH  
SNAPBACK CAP**

023301 | SP1600C / \$32

SIZE OS

98% Cotton, 2% Elastane



01  
Navy Blazer / Bright White /  
High Risk Red

**'MERICA SCRIPT SNAPBACK CAP** 023314 | SP1750C / \$35

87% Acrylic, 11% Wool, 2% Elastane

SIZE OS

**MATCH PLAY USA P CAP** 023653 | SP1750C / \$35

95% Polyester, 5% Elastane

SIZE OS



01  
Puma Black / Bright White  
/ High Rise



02  
Navy Blazer /  
Persian Red /  
Bright White



01  
Puma Black



02  
Navy Blazer /  
Bright White

**MEN'S P REMOVABLE POM  
BEANIE**

023621 | SP1400C / \$28

100% Polyester

SIZE OS

**MEN'S LIFESTYLE BEANIE**

023622 | SP1300C / \$26

50% Acrylic, 50% Polyester

SIZE OS

# ▶ Bags



01  
Puma Black



01  
Puma Black



01  
Puma Black

## PUMA GOLF BACKPACK

078120 | SP3250C / \$65

100% Polyester

L12" W6.25" H18"

## PUMA GOLF CARRY SACK

078121 | SP1100C / \$22

100% Polyester

L13.75" H17.5"

## PUMA GOLF BARREL BAG

078119 | SP3250C / \$65

100% Polyester

L21" W10.5" H10.5"



01  
Puma Black



01  
Puma Black



01  
Puma Black

## PUMA GOLF COOLER BAG

078122 | SP1250C / \$25

100% Polyester

L9.75" W6" H5.5"

## PUMA GOLF SHOE BAG

078123 | SP1500C / \$30

100% Polyester

L9.75" W4.5" H14.25"

## PUMA GOLF VALUABLES POUCH

078124 | SP600C / \$12

100% Polyester

L5.5" W1.5" H7.75"

# ▶ Belts

01  
Puma Black



02  
Bright White



03  
Friar Brown



01  
Navy Blazer



02  
Puma Black



09  
Deep Lichen  
Green /  
Navy Blazer



10  
Placid Blue /  
High Rise



## X LEATHER CTL BELT

054113 | SP2500C / \$50

100% Leather

SIZE OS

## X WEAVE BELT

054086 | SP1750C / \$35

70% Polyester, 30% Rubber

S/M, L/XL

01  
Bright White



02  
Puma Black



03  
Navy Blazer



05  
High Rise



06  
Quiet Shade



01  
Bright White /  
High Rise



Reverse



02  
Puma Black /  
Quiet Shade



03  
Navy Blazer /  
High Rise



## ULTRALITE STRETCH BELT

054020 | SP1300C / \$26

35% Nylon, 35% Rubber, 30% Polyester

SIZE OS

## REVERSIBLE WEB BELT

054044 | SP1000C / \$20

100% Polypropylene

SIZE OS

# ▶ Women's Caps



01  
Puma Black /  
Bright White



02  
Navy Blazer /  
High Rise



03  
Bright White /  
Puma Black



09  
Placid Blue/  
High Rise



01  
Navy Blazer /  
Bright White



02  
Teaberry /  
Bright White



02  
Parfait Pink /  
Navy Blazer /  
Bright White



04  
Navy Blazer /  
Bright White /  
High Rise

## WOMEN'S P CAP ADJUSTABLE

023234 | SP1300C / \$26

63% Polyester, 34% Viscose, 3% Elastane

SIZE OS

## WOMEN'S CHELSEA P ADJUSTABLE CAP

023414 | SP1400C / \$28

95% Polyester, 5% Elastane

SIZE OS

## WOMEN'S REMOVABLE POM P BEANIE

023623 | SP1300C / \$26

100% Acrylic

SIZE OS



01  
Puma Black



02  
Bright White



07  
Navy Blazer



09  
Parfait Pink



01  
Puma Black



02  
Bright White



07  
Navy Blazer



09  
Parfait Pink

## WOMEN'S SPORT ADJUSTABLE CAP

023237 | SP1200C / \$24

86% Polyester, 14% Elastane

SIZE OS

## WOMEN'S SPORT VISOR

023238 | SP1100C / \$22

86% Polyester, 14% Elastane

SIZE OS

# ▶ Youth Accessories



01  
Thyme/Puma Black



02  
Puma Black /  
Puma Black

**YOUTH CAMO P 110  
SNAPBACK CAP** 023242 | SP1100C / \$22  
97% Polyester, 3% Elastane SIZE OS



01  
Puma Black / Bright White  
/ Irish Green

**YOUTH MOVING DAY 110  
SNAPBACK CAP** 023367 | SP1400C / \$28  
97% Polyester, 3% Elastane SIZE OS



01  
Puma Black / Acid Lime



02  
Federal Blue /  
Corydalis Blue

**YOUTH MINI GOLF P 110  
SNAPBACK CAP** 023416 | SP1100C / \$22  
95% Polyester, 5% Elastane SIZE OS



01  
Puma Black /  
Bright White



04  
Bright White /  
Puma Black



06  
Vibrant Orange /  
Quarry



07  
Blue Bell /  
High Rise



09  
Navy Blazer /  
Quarry



10  
High Rise /  
Navy Blazer

**YOUTH P 110 SNAPBACK CAP** 022697 | SP1000C / \$20  
95% Polyester, 5% Elastane SIZE OS



01  
Bright White /  
High Rise

02  
Puma Black /  
Navy Blazer

**YOUTH REVERSIBLE WEB BELT** 054022 | SP1000C / \$20  
100% Polypropylene SIZE OS



01  
Bright White



04  
Navy Blazer



06  
Parfait Pink

**GIRL'S SPORT CAP**

023241 | SP900C / \$18

86% Polyester, 14% Elastane

SIZE OS

# ▶ Socks



01  
Multi Color



01  
Multi Color



01  
Bright White



02  
Puma Black



03  
Multi Color

**PUMA FUSION STRIPE CREW SOCK 3 PAIR PACK** 929811 | SP1200C / \$24

80% Cotton, 15% Polyester, 5% Spandex MEN'S 7-12

**PUMA FUSION CREW SOCK 3 PAIR PACK** 929810 | SP1200C / \$24

80% Cotton, 15% Polyester, 5% Spandex MEN'S 7-12

**POUNCE CREW CUT 3 PAIR PACK**

928971 | SP800C / \$16

97% Polyester,

MEN'S 7-12



01  
Bright White



02  
Puma Black



01  
Bright White



02  
Puma Black



05  
Multi Color

**POUNCE SINGLE TAB**

929812 | SP400C / \$8

80% Cotton, 15% Polyester, 5% Spandex

MEN'S 7-12

**POUNCE LOW CUT 3 PAIR PACK**

928968 | SP700C / \$14

65% Polyester, 30% Cotton, 5% Spandex

MEN'S 7-12





02  
Multi Color

**NO-SHOW 3 PAIR PACK**

928969 | SP700C / \$14

98% Polyester, 2% Spandex

MEN'S 7-12



01  
Multi Color

**W FUSION NO-SHOW  
3 PAIR PACK**

929809 | SP800C / \$16

97% Polyester, 2% Spandex, 1% Elastane

WOMEN'S 5-10



01  
Multi Color

**W NO-SHOW 3 PAIR PACK**

927489 | SP700C / \$14

97% Polyester, 2% Spandex, 1% Elastane

WOMEN'S 5-10



01  
Bright White /  
Muti Color

**W POUNCE LOW CUT 3 PAIR PACK**

897586 | SP700C / \$14

65% Polyester, 30% Cotton, 5% Spandex

WOMEN'S 5-10



06  
Multi Color

# PUSH PLAY

PUMA GOLF

1818 ASTON AVE.  
CARLSBAD, CA 92008

SUMMER / FALL 2021

PRODUCT CATALOG



@PUMAGOLF